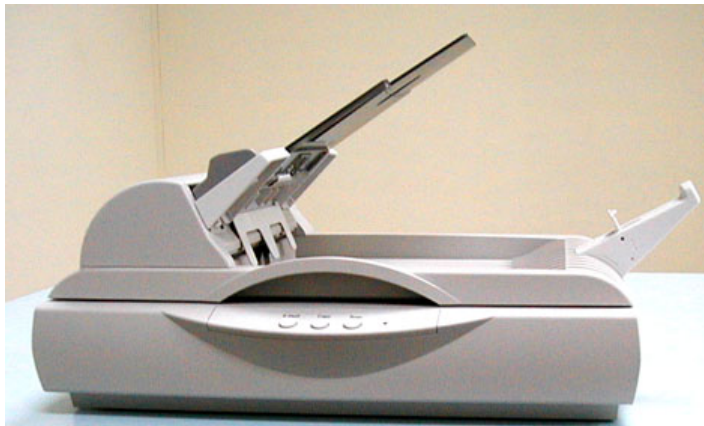


DOCUMATE 520 Service Manual



Version 1.0

Visioneer Inc.

Contents

1. INTRODUCTION	1-1
1.1 GENERAL NOTES FOR SERVICING.....	1-1
1.2 GENERAL DESCRIPTION	1-2
2. SPECIFICATION.....	2-1
3. UNPACKING, INSTALLATION, AND TRANSPORTATION	3-1
3.1 PRECAUTIONS OF INSTALLATION.....	3-1
3.2 UNPACKING PROCEDURE	3-1
3.3 INSTALLATION.....	3-3
3.4 PLACING THE ORIGINAL	3-5
3.5 TRANSPORTATION	3-6
4. THEORY OF OPERATION.....	4-1
4.1 INTRODUCTION	4-1
4.2 MAIN CONTROL UNIT	4-2
4.2.1 System diagram.....	4-2
4.2.2 Main control circuit.....	4-3
4.2.3 Video circuit:	4-4
4.2.4 LED and Push Button	4-7
4.2.5 Sensor input.....	4-8
4.2.6 Sub power supply circuit.....	4-8
4.2.7 Power supply	4-9
5. PROBLEM SOLVING	5-1
5.1 DIAGNOSTICS	5-1
5.1.1 Online diagnostics	5-1
5.1.2 Offline diagnostics	5-1
5.1.3 Diagnostic flowcharts.....	5-3
5.2 TROUBLESHOOTING.....	5-6
5.2.1 Flowcharts	5-6
5.2.2 Tables	5-11
6. DISASSEMBLY	6-1
6.1 SERVICE TOOLS	6-1
6.2 LUBRICANTS.....	6-1
6.3 PROCEDURE FOR DISASSEMBLY AND REASSEMBLY	6-1
6.4 SERVICE TOOL	6-1
6.5 LUBRICANTS.....	6-2
6.5.1 Mechanical Unit Lubrication	6-2
6.6 PROCEDURE FOR DISASSEMBLY AND REASSEMBLY	6-4
6.6.1 Notes on disassembly	6-4
6.6.2 Removing the ADF unit	6-5
6.6.3 Removing the Button Panel.....	6-7
6.6.4 Removing the Main Control Board	6-8

6.6.5	Removing the Upper Housing	6-9
6.6.6	Remove the Optical Chassis	6-10
6.6.7	Removing the Lamp Assembly	6-12
6.6.8	Removing the Inverter	6-13
6.6.9	Removing the Motor Unit	6-14
6.6.10	Replacing the ADF Snap-in Pad Module	6-15
7.	PARTS	7-1
7.1	SPARE PART DIAGRAM	7-1

1. INTRODUCTION

1.1 General Notes for Servicing

1.2 General Description

This manual is intended to be used by the maintenance engineers. It describes areas to be maintained, the detailed installation, the disassembly of optional ADF, and the component replacement procedures as well as the main trouble shooting guides.

Please take your time to read this manual thoroughly to obtain comprehensive knowledge about the DOCUMATE 520 before serving the unit.

1.1 General notes for servicing

- (1) Before trying to disassemble the DOCUMATE 520, make sure the power supply cord of the DOCUMATE 520 is disconnected from the power outlet. Under any circumstance, do not remove or install the connectors on the DOCUMATE 520 with the power supply turned ON.
- (2) Use caution not to drop small parts or screws inside the unit when disassembling and reassembling. If left inside, they might cause the malfunction of the unit.
- (3) Do not pull the connector cable when disconnecting it. Hold the connector.
- (4) When carrying the scanning head unit, put it in an anti-static bag.
- (5) Keep the document table glass surface always clean. If contaminated, use a dry clean cloth for cleaning.
- (6) Use caution not to injure your fingers or hands when disassembling or reassembling the unit.

1.2 General Description

DOCUMATE 520 is an easy-to-use button scanner with automatic document feeder. The button design enables your scanner tasks such as scan, e-mail, and copy to be completed in a touch of a button.

With the 25-sheet automatic document feeder, DOCUMATE 520 can efficiently scan multi-page document up to 17 pages per minute.

2. SPECIFICATION

2.1 Basic Specification

Product Name:	DOCUMATE 520
Type:	ADF/Flatbed Desktop scanner
Optical Resolution:	up to 600 x 1200 dpi (1% increments)
Color Depth:	48-bit single pass color (R, G, B)
Image Type:	256 shades of gray scale 64 shades of gray for halftones Line art (binary) Error diffusion 8-bit Color 24-bit Color
ADF Scan Speed: (at 200dpi B&W A4 size)	20 pages per minute
Scan Area:	Flat-bed: up to European A4 (8.5" x 11.69") ADF: minimum: 4.5" x 5.5" ADF: maximum: up to legal size (8.5" x 14")
Paper Size:	A4, A5, Letter, Legal, B5, Business card 3.5" x 2.0" (Flatbed Mode)
Paper Thickness:	16 – 28 lbs/0.002" ~ 0.006"
Paper Input (ADF):	up to 25 sheets
Physical Dimension:	444 mm (W)x 316 mm(D)x275 mm(H)
Weight:	4.7g (10.35 lbs.)
Interface:	USB 2.0
Voltage:	100 to 240 V (International)
Frequency:	47 to 63 Hz
Power Consumption:	≤ 30 Watts

3. UNPACKING, INSTALLATION, AND TRANSPORTATION

- | | |
|-----|-----------------------------|
| 3.1 | Precautions of Installation |
| 3.2 | Unpacking Procedure |
| 3.3 | Installation |
| 3.4 | Placing the Original |
| 3.5 | Transportation |

3.1 Precautions of Installation

Pay attention to the following matters before unpacking and installation.

- Do not install in a place where vibration may occur.
- Keep the DOCUMATE 520 out of direct sunlight. Do not install near a heat source.
- Do not place the DOCUMATE 520 around materials which shut off the circulation of air.
- Do not install in a humid or dusty place.
- Use care not to scratch the glass surface of the DOCUMATE 520 or the document holding pad with a clip or staple.
- Do not use the wall socket with connecting devices which may generate noise, for example, air-conditioner, etc.
- Use a suitable AC power source.
- Place the DOCUMATE 520 on a level surface.

3.2 Unpacking Procedure

Unpack the DOCUMATE 520 according to the following procedure.

- Remove the packing material.
- Remove the DOCUMATE 520 from the shipping container.
- Remove the DOCUMATE 520 from the PVC bag.
- Check the items by referring to Figure 3.1.
- For any missing items, please contact your nearest dealer or distributor.

Note: Keep all the packing material in case you may need to return the DOCUMATE 520.

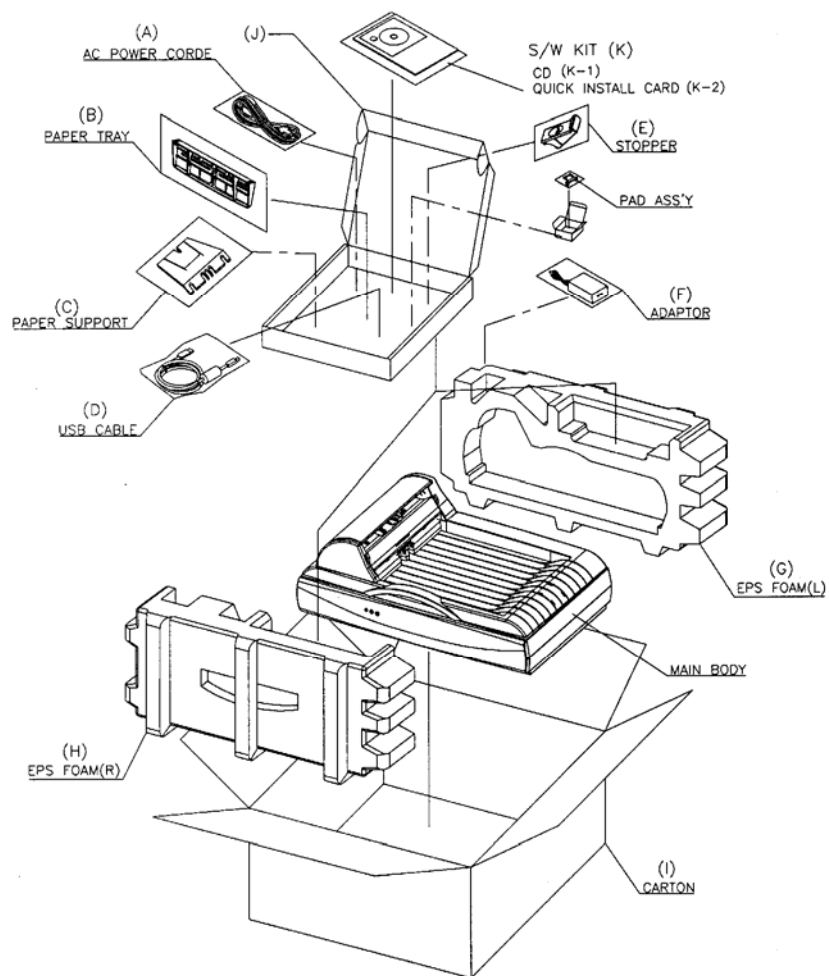


Figure 3.1 Package Contents

3.3 Installation

(1). Unlocking the DOCUMATE 520

Before you use DOCUMATE 520, be sure to unlock it by moving the lock switch under the DOCUMATE 520 to the “Unlock” position (See the following figure). The lock switch is designed to protect the scanning head in case of any damage during shipment.

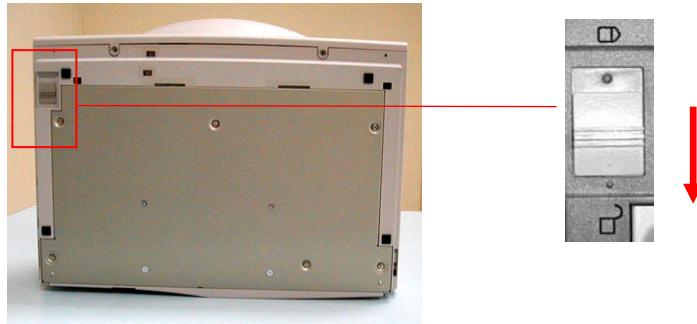


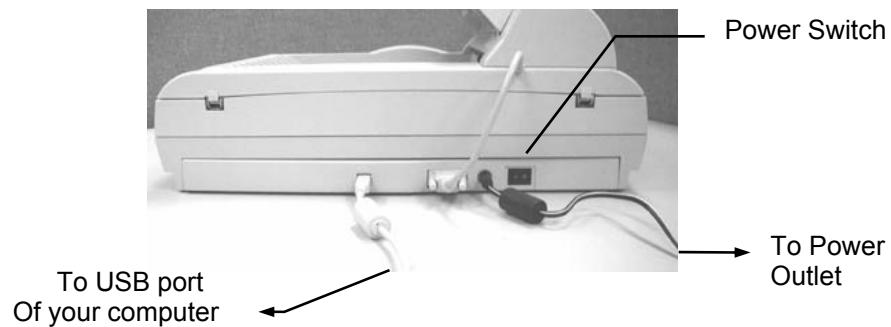
Figure 3.2 Unlock the DOCUMATE 520

Note: If you need to transport the DOCUMATE 520, be sure to first move the lock switch to the “Lock” position to prevent any damage during transportation.

(2). Connecting the Cables

Be sure the scanner power is switched off.

Connect the power cable, ADF cable, and USB cable as Figure 3.3.



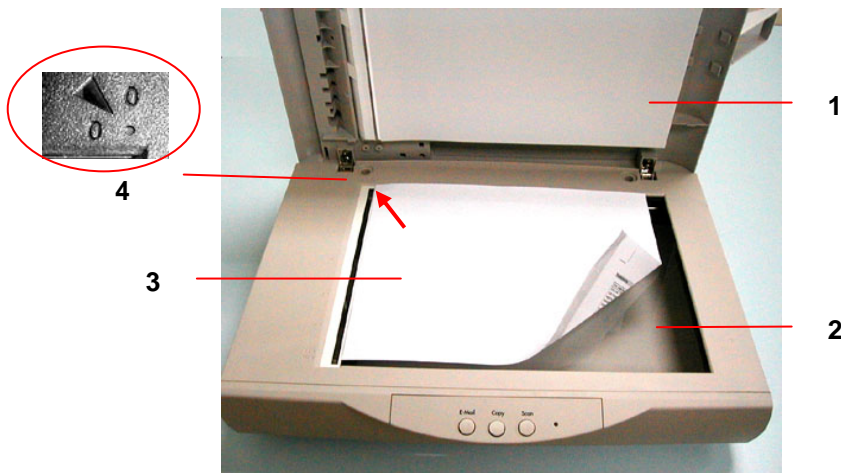
r

Turning on the Power

The power is controlled by a toggle switch on the side of the scanner. To turn on the scanner, press the switch toward "1".

3.4 Placing the original

- (1) Place your original face down on the document glass.
- (2) Observe that the upper-left corner (front page) of your original is placed beneath the home position mark.



1. Document Cover
2. Glass
3. Document
4. Home Position

Figure 3.4 Placing the original

3.5 Transportation

To move the DOCUMATE 520 from where it is installed, for repair or any other reason, make sure to observe the following conditions:

- (1) Turn off the power of the DOCUMATE 520.
If the scanning head is located at a place other than the home position, turn the DOCUMATE 520 on to return the scanning head to the home position. Before making sure the scanning head is returned to the home position, turn the power supply off.
- (2) Move the lock switch to the "lock" position.
- (3) Remove the power and printer cables.
- (4) Put the DOCUMATE 520 in the packing case with the packing material.

4. THEORY OF OPERATION

- 4.1 Introduction
- 4.2 Main Control Board

4.1 Introduction

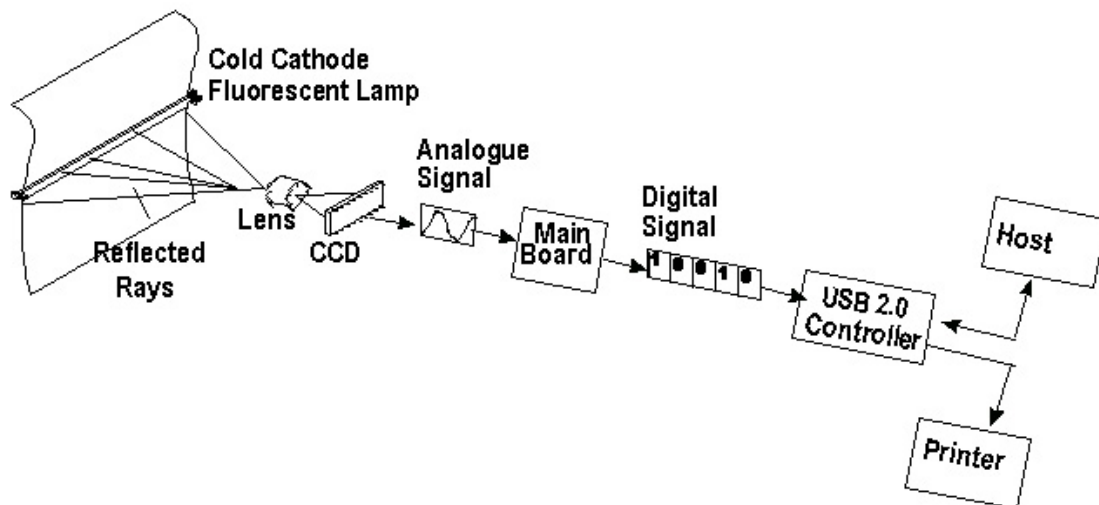


Figure 4.1 Theory of Operation

The reflected rays of your original, as shown in the above Figure 4.1 pass through the lens and creates an image on the CCD (Charged Coupled Device). Then, according to the different light intensity perceived by the CCD, the CCD will transfer these data into a series of analog signals to the main board, where the signals are turned into digital signals. These digital signals flow to the USB 2.0 Controller to transfer to a host computer.

4.2 Main control unit

4.2.1 System diagram

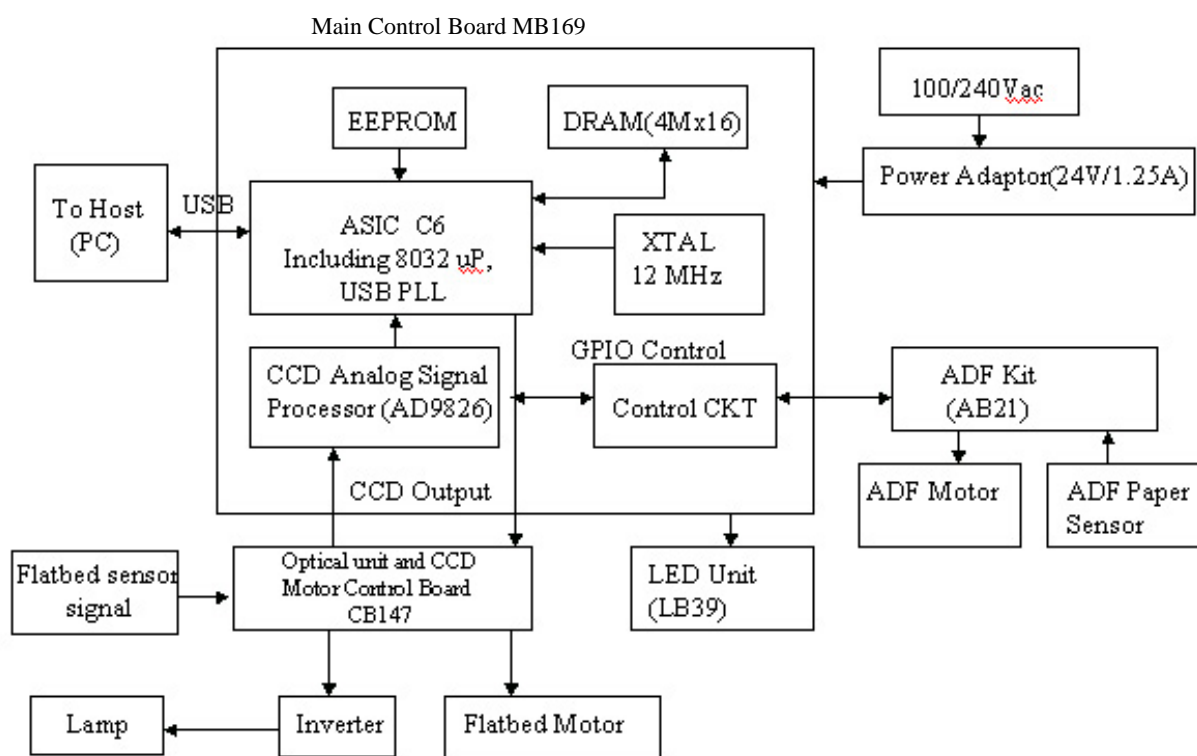


Figure 4.2 System block diagram

4.2.2 Main control circuit

This DOCUMATE 520 is controlled by the 80C32. The 80C32 is configured with a 64-KB external ROM program area, a 256-BYTE internal RAM work area, a 64-KB external RAM work area, 2 timer / counters, 4 I/O ports, 2 external interrupts, and 2 internal interrupts for 2 internal timer / counters.

Address Maps:

- ROM program area:

0000	64KB Program
FFFF	

- Internal RAM working area:

00	256-byte Internal Registers
FF	

- External RAM working area:

0000	64-KB External Registers
FFFF	

4.2.3 Video circuit:

The video circuit of this DOCUMATE 520 includes: 1. CCD driving circuit, 2. CCD signal processing circuit.

1. CCD Driving Circuit

The CCD driving circuit is used to generate correct signals to the CCD, so that the CCD may generate the correct image data.

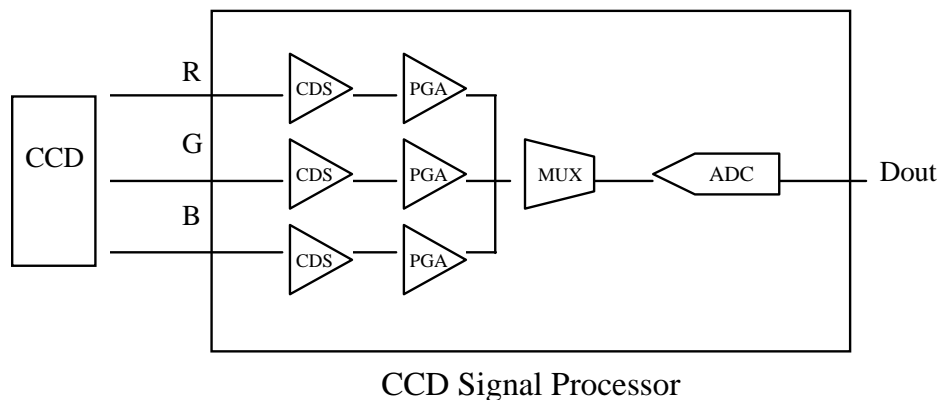
Signals for CCD:

Pin Assignment for CCD cable

Pin No.	Name	Function
1	24V1	Inverter Power Supply
2	24V1	Inverter Power Supply
3	IG	Inverter Ground
4	IG	Inverter Ground
5	24VM	Motor Driver Power Supply
6	24VM	Motor Driver Power Supply
7	FM_PH2	Motor Phase Control 2
8	FM_PH1	Motor Phase Control 1
9	MLCC_1	Control Motor Driver Input Voltage
10	NC	Non connection
11	FM_IS3	Motor Coil 2 current Control 2
12	FM_IS2	Motor Coil 2 current Control 1
13	FM_IS1	Motor Coil 1 current Control 2
14	FM_IS0	Motor Coil 1 current Control 1
15	DG	Digital Ground
16	Vcc	Digital 5V Power Supply
17	MLCC	Control Motor Driver Input Voltage
18	HMSEN	Home Sensor Signal
19	PH1A	CCD Clock Phase
20	PH2A	CCD Clock Phase
21	CP	Clamp Gate
22	RS	CCD Reset Gate

Pin No.	Name	Function
23	DG	CCD Blue Channel Output Signal
24	SW	Changeover Switch(Color and B/W)
25	12Vc	CCD Power Supply
26	SH	CCD RGB Channel Output Signal
27	VoB	CCD Blue Channel Output Signal
28	AG	Analog Ground
29	VoG	CCD Green Chanel Output Signal
30	AG	Analog Ground
31	VoR	CCD Red Channel Output Signal
32	AG	Analog Ground

2. CCD signal processing circuit



The CCD signal processor includes all the necessary circuitry to perform three-channel conditioning and sampling. The signal chain consists of three-channel correlated double sampling (CDS) and programmable gain adjustment of the CCD output (PGA) is a 16 bit analog to digital converter (ADC) quantizes the analog signal.

4.2.4 LED and Push Button

The circuit for Push Button module shows the function of the entire scanner including Error LED(Red), the Ready LED (Green), and the Push Button.

Pin assignment of LED module

Pin No.	Name	Function
1	Vcc	+5V power
2	Ground	Digital Ground
3	LED-G	Ready status indicator
4	LED-R	Error status indicator
5	Button1_In	Press the button to "E-mail"
6	Button2_In	Press the button to "Copy"
7	Button3_In	Press the button to "Scan"

4.2.5 Sensor input

The sensor input includes home position sensor.

Home position sensor

The home position of the carrier motor is detected by photo sensor. The photo transistor transmission to the photo sensor receiver circuit is shown below .

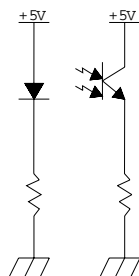
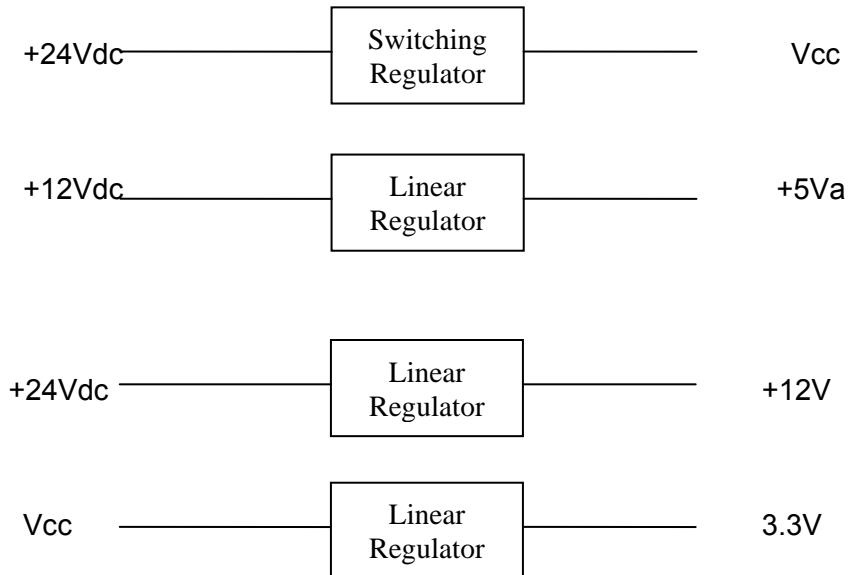


Figure 4.3 Home position sensor

The home position is detected when the carrier passes between the LED and the photo transistor.

4.2.6 Sub power supply circuit

The sub power supply circuit is provided for the internal analog circuit. Input is 24V and output is Vcc and +5Va. The circuit configuration is shown below:



The sub power supply is used for: A/D, and logic circuits.

4.2.7 Power supply

In this system, there is only one type of power supply. Please see Table 4.1 for details.

Table 4.1 Power Adapter

Characteristic \ Type	Wall-mount
Input voltage range	100-240V
Input current(at rated input/output.)	1A type or less
Input frequency	50-60Hz
Max. in-rush current(@full load, cold start)	70A
Output voltage	+24Vdc
Min. load current	0.0A
Max. load current	1.25A
Total Power at full load	30W

5. PROBLEM SOLVING

3.1 Diagnostics

3.2 Troubleshooting

This chapter supplies two paths for dealing with operational problems. The first relies on the DOCUMATE 520's internal diagnostics. The second uses troubleshooting flowcharts and tables to isolate the problem. In many cases, the internal diagnostics will help you to locate the source of the problem quickly. Use these diagnostics first. If the diagnostics do not locate the source of the problem, refer to Section 3.2 **Troubleshooting**.

5.1 Diagnostics

The DOCUMATE 520 has internal diagnostics to help you determine the cause of operational problems. Some of the diagnostics function with the scanner online, while others are part of a separate offline diagnostics feature.

5.1.1 Online diagnostics

Determine operational problems by observing the display panel Power, Ready, and Check LED's. With the scanner online and operating normally, the Ready LED is on and the Paper Jam LED is off. Any other LED combination indicates a problem, as shown in the following table.

Ready LED	Check LED	Error indication
Off	Blinking	Group Error
Blinking	Off	Power on diagnostics

Table 3.1 Online diagnostics

If the ADF cover is open, close it. For the group errors, see the flowcharts later in this section.

5.1.2 Offline diagnostics

To run the offline diagnostics, and turn the power back on. When you first turn the scanner back on, the READY light will blink, indicating that the diagnostics are in progress. Observe the front

panel LED's closely. In a short time, the LED's indicate the results of the offline diagnostics as explained in the table below.

Ready LED	Check LED	Error indication
OFF	2 blinks	DRAM FAILURE
OFF	3 blinks	DC offset adjust failure
OFF	5 blinks	Motor or Home sensor error
OFF	6 blinks	Optical error
OFF	7 blinks	Chassis locked
OFF	8 blinks	USB RD/WR failure

Table 3.2 Offline diagnostics results

For DRAM error, refer to Main Control PCBA Replacement in Chapter 4. For the Group 2 error, see the flowchart in the following section.

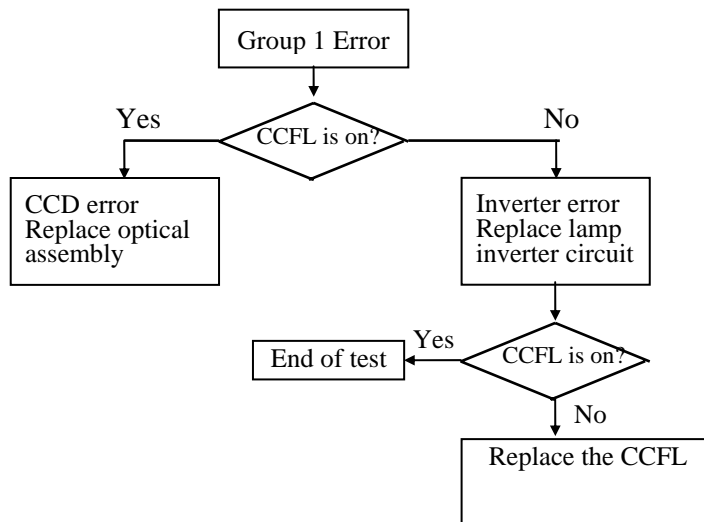
To return the scanner to online operation, turn off the scanner, turn the scanner back on.

5.1.3 Diagnostic flowcharts

Use the flowcharts that follow to determine the exact problem when either the online or offline diagnostics indicate a group error. Refer to Chapter 4 for parts replacement.

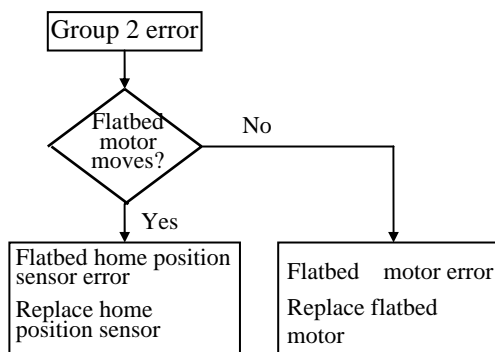
5.1.3.1 Group 1 error flowchart (CCFL assembly)

This flowchart applies when the Check LED blinks 6 times the same while, with the scanner offline.



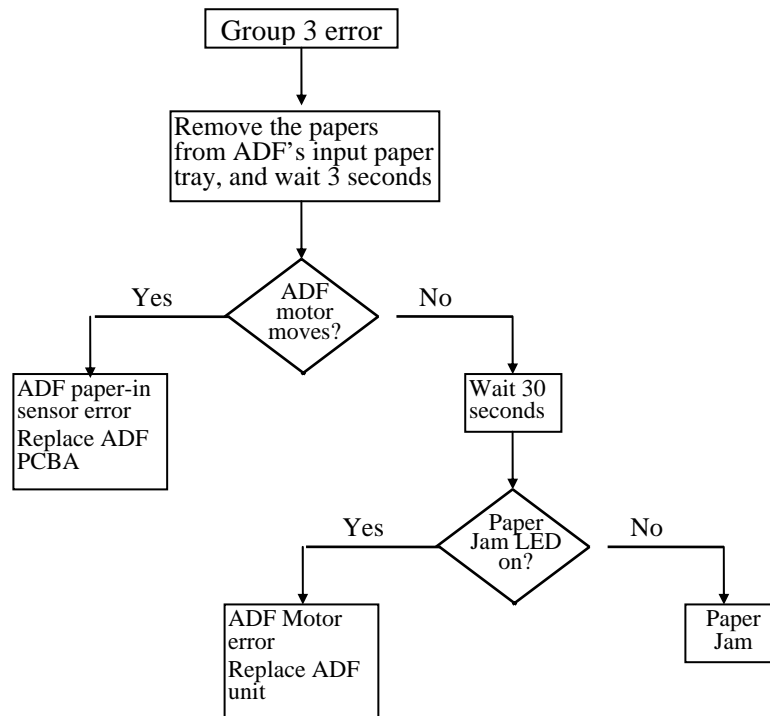
5.1.3.2 Group 2 error flowchart (Flatbedmotor)

This flowchart applies when the offline diagnostics error indication is the simultaneous blinking 5 times of the Check LED.



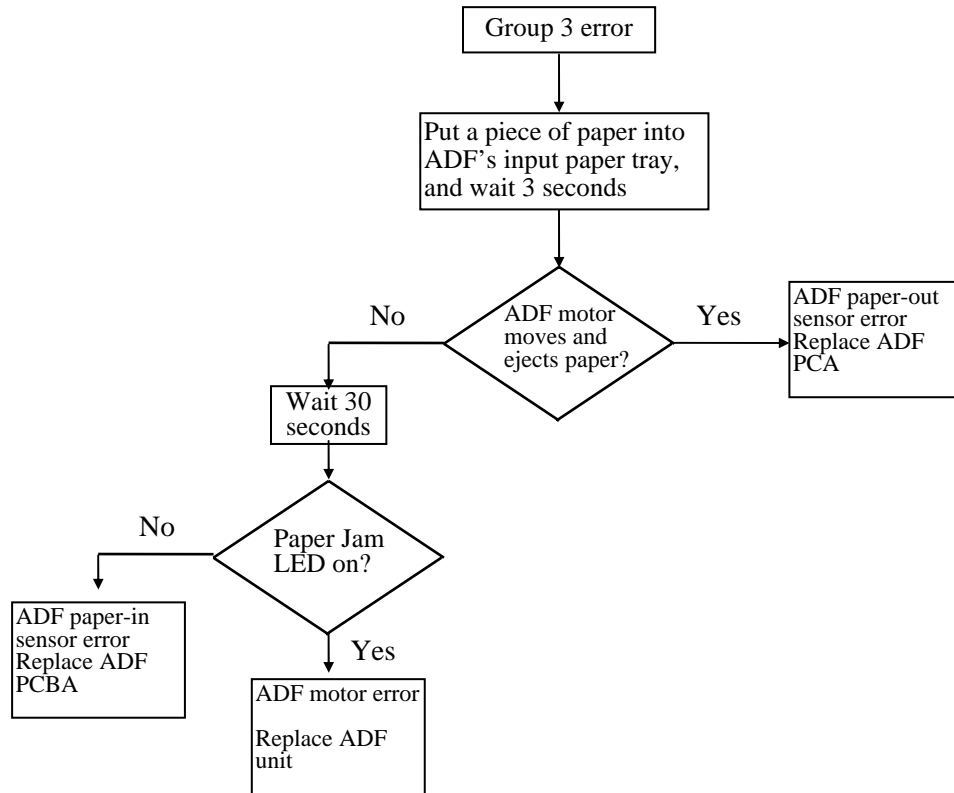
5.1.3.3 Group 3 error flowchart (paper in ADF paper tray)

This flowchart applies when the Ready LED is off and Paper Jam LED steadily on with the scanner online, and there is paper in the ADF paper tray.



5.1.3.4 *Group 3 error flowchart (no paper in ADF paper tray)*

This flowchart applies when the Ready LED is off and Paper Jam LED steadily on with the scanner online, and there is no paper in the ADF paper tray.



5.2 Troubleshooting

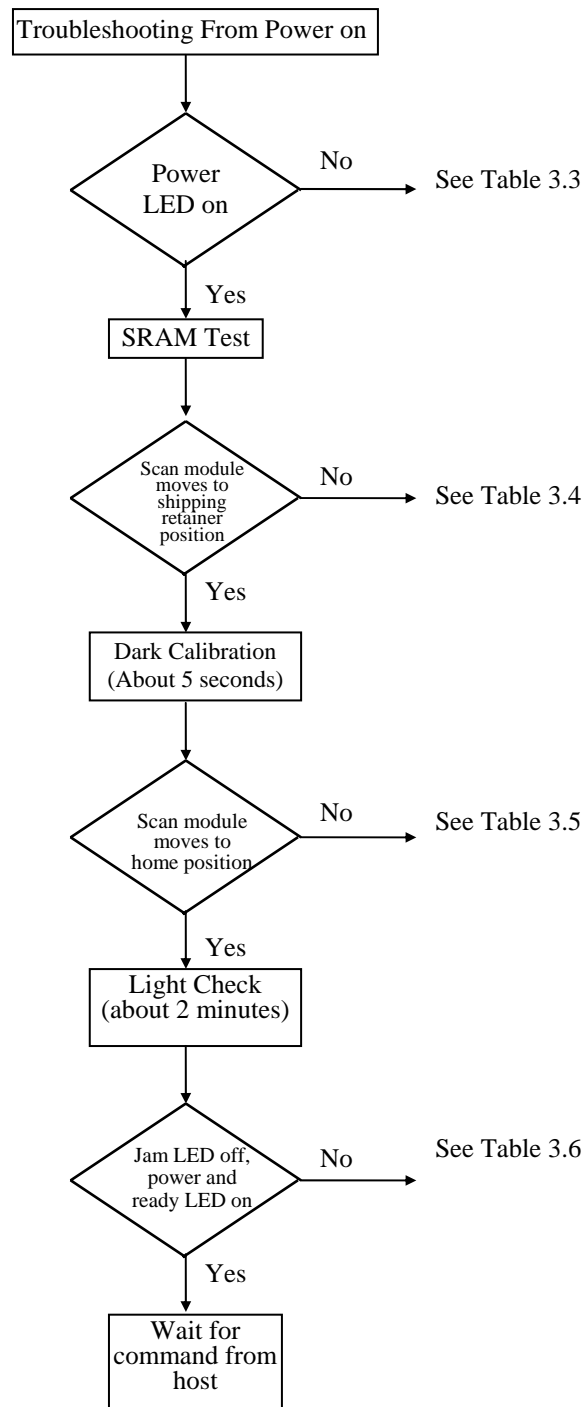
Refer first to the applicable troubleshooting flowchart in the following three sections. The flowcharts refer you to the appropriate table for detailed troubleshooting.

5.2.1 Flowcharts

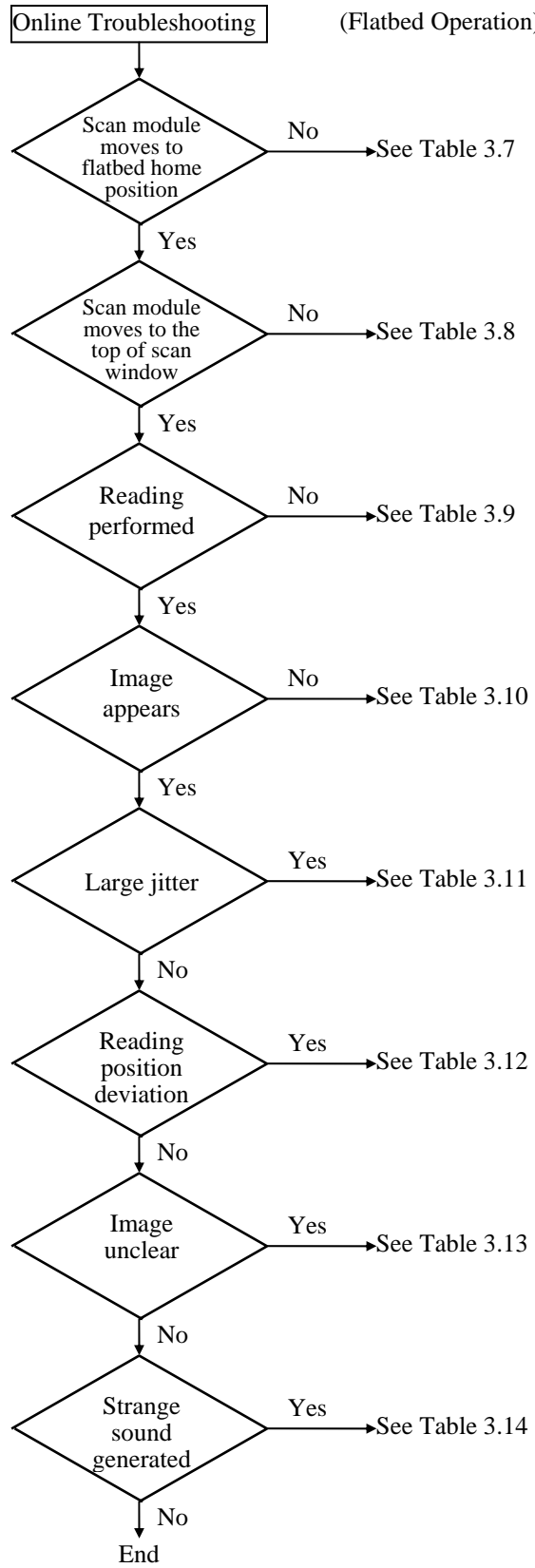
This section provides the following troubleshooting flowcharts:

- Troubleshooting from power on to scanner ready
- Online troubleshooting (flatbed operation)
- Online troubleshooting (ADF operation)
- Offline troubleshooting (flatbed operation)

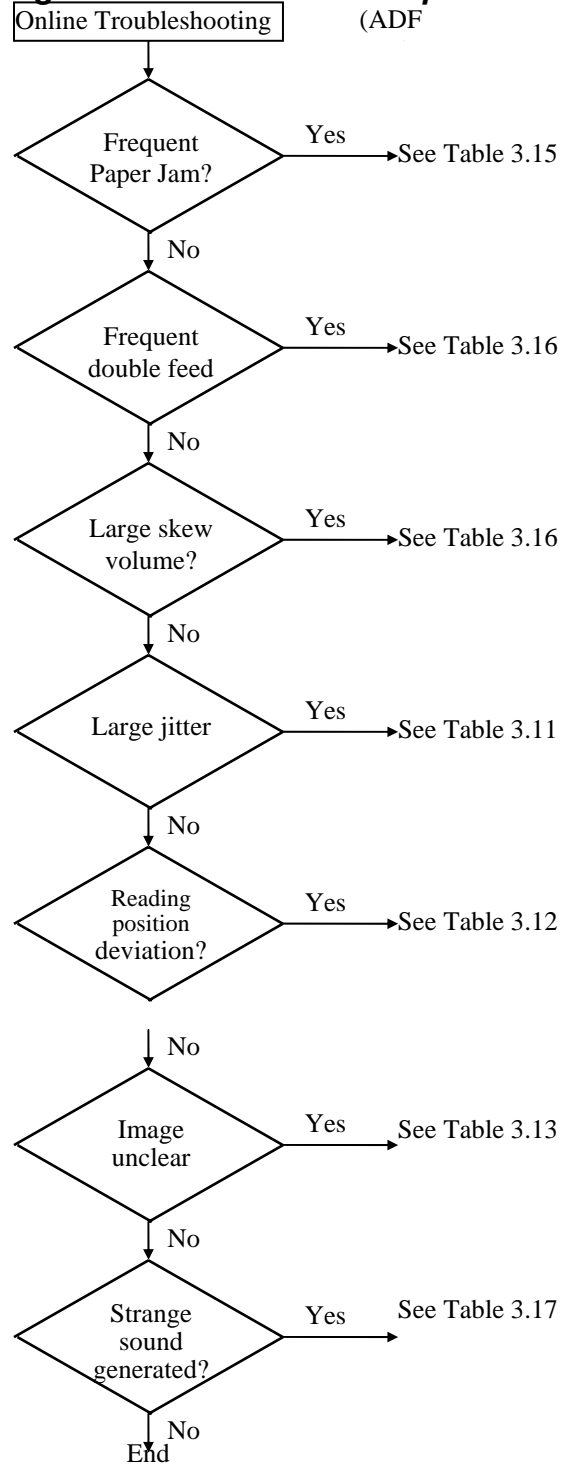
5.2.1.1 **Troubleshooting flowchart: power on to scanner ready.**



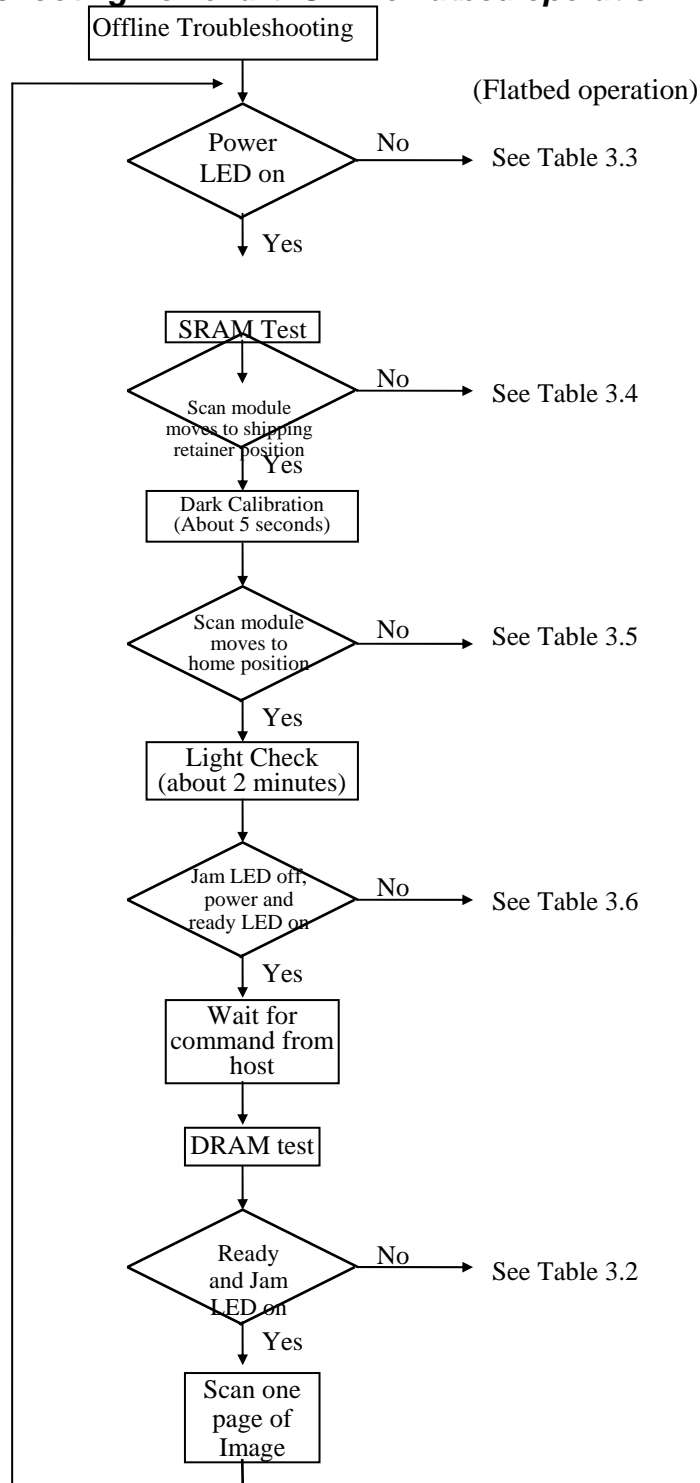
5.2.1.2 Troubleshooting flowchart: online flatbed operation



5.2.1.3 Troubleshooting flowchart: online ADF operation



5.2.1.4 Troubleshooting flowchart: Offline flatbed operation



5.2.2 Tables

The tables in this section provide detailed troubleshooting information.

5.2.2.1 *The Power LED does not go on*

Cause	Relevant Unit	Check Method υ	Maintenance Method	Remark
Unplugged from outlet	None	Visual check	Insert the AC plug into the outlet.	None
AC power unplugged at unit	None	Visual check	Insert the AC cable into unit.	None
Power switch is OFF	None	Visual check	Turn the power switch on.	None
AC voltage failure	None	AC outlet voltage check	None	None
Power unit AC input connector disconnected	None	Visual check	Connect the connector.	None
Power switch connector disconnected	None	Visual check	Connect the connector.	None
Power unit-main PCBA connection failure	None	Visual check	Connect the connector.	None
Power unit output voltage failure	Power unit	Output voltage (+15V) check Ξ	Replace the power unit	None
PCBA Failure	*main control PCBA *LED board	Tester check (+24V, GND) Ξ	Remove the cause or replace the PCBA.	None
LED board-main PCBA connection failure	None	Visual check	Connect the connector	None

Table 3.3

υ = Check method explains how to check the failed item.

The visual check can be made by physically observing the part or observing the offline test display on the front panel. The tester check is made by checking the voltage levels of the relevant units. (See section 4.6)

Ξ = Refer to section 4.6.

5.2.2.2 Scan module does not move to shipping retainer position

Cause	Relevant Unit	Check Method	Maintenance Method	Remark
Sensor board-main control PCBA connection failure	None	Visual check	Connect the connector.	None
Home position sensor board-main control PCBA cable failure.	Sensor board-main control PCBA cable	Tester or visual check H	Replace the home position cable.	υ
Home position sensor board failure	Home position sensor PCBA	Tester check H	Replace the PCBA	None
Motor-main control PCBA connection failure	None	Visual check	Connect the connector.	None
Motor failure	Motor	Visual check	Replace the motor.	None
Power supply-main control board connection failure	None	Visual check	Connect the connector.	None
Power supply fails.	Power supply	Tester check (+24V, GND) H	Replace the power supply.	None

Table 3.4

υ = See section 1.4.3 Wiring configuration

H = Refer to section 4.6

5.2.2.3 Scan module does not move to the home position

Cause	Relevant Unit	Check Method	Maintenance Method	Remark
Home position sensor board-main control PCBA connection failure	None	Visual check H	Connect the connector.	None
Home position sensor board-main control PCBA cable failure	Sensor board-main control PCBA cable	Tester or visual check H	Replace the home position sensor cable.	U
Home position sensor board failure	Sensor board	Tester check H	Replace the PCBA.	None
Power supply-main control board connection failure	None	Visual check	Connect the connector.	None
Power supply fails	Power supply	Tester check (+24V, GND) H	Replace the power supply.	None
Lamp failure	Lamp	Visual check	Replace the lamp.	None
Inverter failure	Inverter	Visual check	Replace the inverter.	None
CCD board-main control board connection failure	None	Visual check	Connect the connector	None
CCD board fails	CCD board	Tester check	Replace the optical unit	None

Table 3.5

U = See section 1.4.3 Wiring configuration

H = Refer to section 4.6

5.2.2.4 Ready and Power LED does not light on

Cause	Relevant Unit	Check Method	Maintenance Method	Remark
Home position sensor board-main control PCBA connection failure	None	Visual check	Connect the connector.	None
Home position sensor board-main control PCBA cable failure	Sensor board-main control PCBA cable	Tester or visual check H	Replace the home position sensor cable.	υ
Home position sensor board failure	Sensor board	Tester check H	Replace the PCBA.	None
Power supply-main control board connection failure	None	Visual check	Connect the connector.	None
Power supply fails	Power supply	Tester check (+24V, GND) H	Replace the power supply.	None

Table 3.6

υ = See section 1.4.3 Wiring configuration

H = Refer to section 4.6

5.2.2.5 *Scan module does not move to the flatbed position*

Cause	Relevant Unit	Check Method	Maintenance Method	Remark
Power supply-main control board connection failure	None	Visual check	Replace the power supply.	None
Power supply fails	Power supply	Tester check (+24V, GND) H	Replace the power supply.	None
Motor-main control PCBA connection failure	None	Visual check	Connect the connector.	None
Motor failure	Motor	Visual check H	Replace the motor module.	None

Table 3.7

H Refer to section 4.6.

5.2.2.6 Scan module does not move to the top of the scan window

Cause	Relevant Unit	Check Method	Maintenance Method	Remark
Power supply-main control board connection failure	None	Visual check	Connect the connector.	None
Power supply fails	Power supply	Tester check (+15V, GND) H	Replace the power supply.	None
Lamp Failure	Lamp	Visual check	Replace the lamp.	None
Inverter Failure	Inverter	Visual check	Replace the inverter	None
CCD board-main control board connection failure	None	Visual check	Connect the connector.	None
CCD board fails	CCD Board	Visual check	Replace the optical unit.	None

Table 3.8

H Refer to section 4.6

5.2.2.7 *Reading is not performed*

Cause	Relevant Unit	Check Method	Maintenance Method	Remark
ADF cover open	ADF cover	Visual check	Close the ADF cover.	None

Table 3.9

5.2.2.8 *Image does not appear*

Cause	Relevant Unit	Check Method	Maintenance Method	Remark
ADF cover open	ADF cover	Visual check	Close the ADF cover	None
Power supply-main control board connection failure	None	Visual check	Connect the connector.	None
Power supply fails.	Power supply	Tester check (+15V, GND) H	Replace the power supply.	None
Lamp failure	Lamp	Visual check	Replace the lamp.	None
Inverter failure	Inverter	Visual check	Replace the inverter.	None
CCD board-main control board connection failure	None	Visual check	Connect the connector.	None
CCD board fails.	CCD Board	Visual check	Replace the optical unit.	None

Table 3.10

5.2.2.9 *Large jitter*

Cause	Relevant Unit	Check Method	Maintenance Method	Remark
Power supply-main control board connection failure	None	Visual check	Connect the connector.	None
Power supply fails	Power supply	Tester check (+15V, GND) H	Replace the power supply.	None
Motor-main control PCBA connection failure	None	Visual check	Connect the connector.	None
Motor failure	Motor	Visual check	Replace the motor.	None

Table 3.11

H = Refer to section 4.6.

5.2.2.10 *Reading position deviation*

Cause	Relevant Unit	Check Method	Maintenance Method	Remark
Power supply-main control board connection failure	None	Visual check	Connect the connector.	None
Power supply fails	Power supply	Tester check (+15V, GND) H	Replace the power supply.	None
Motor- main control PCBA connection failure	None	Visual check	Connect the connector.	None
Motor failure	Motor	Visual check	Replace the motor	None
Home position sensor board-main control PCBA cable failure	None	Visual check	Connect the connector	None
Home position sensor board-main control PCBA cable failure	Sensor board-main control PCBA cable	Tester or visual check	Replace the home position sensor cable	None
Home position sensor board failure	Sensor board	Tester check	Replace the PCBA.	None

Table 3.12

H Refer to section 4.6.

5.2.2.11 *Image unclear*

Cause	Relevant Unit	Check Method	Maintenance Method	Remark
Lamp too dark	Lamp	Visual check	Replace with a new lamp.	None
Dirt on calibration reference plate	Calibration reference plate	Visual check	Clean the flatbed glass with isopropyl alcohol.	None
Dirt on calibration reference plate	Calibration reference plate	Visual check	Clean the calibration reference plate with isopropyl alcohol.	None
Dirt on the mirrors	Mirrors	Visual check	Clean the mirrors with isopropyl alcohol.	None
Dirt on the lens	Lens	Visual check	Clean the lens with isopropyl alcohol.	None

Table 3.13

5.2.2.12 Strange sound generated (flatbed)

Cause	Relevant Unit	Check Method	Maintenance Method	Remark
Motor unit failure	Motor unit	Replace the motor unit.	Replace the motor unit.	None
Main control PCBA failure	Main control PCBA	Replace the main control PCBA.	Replace the main control PCBA.	None
Scanning module failure	Scanning module	Check if scanning module is loose.	Replace the optical unit.	None
Dirt on rail	None	Visual check	Clean the rail with isopropyl alcohol	None

Table 3.14

5.2.2.13 Frequent paper jam

Cause	Relevant Unit	Check Method	Maintenance Method	Remark
Paper setting failure	Operation error	Is the paper correctly set in the paper chute?	Teach users to properly position the paper.	None
Paper failure	operation error	Is the specified paper used?	None	None
ADF connector slip-off	ADF unit	Visual check of motor rotation	Connect the connector.	None
Pad assembly failure	Pad assembly	Check the pad assembly for wear and tear	Replace the pad assembly/ touch spring unit.	None
ADF unit failure	ADF unit	Replace the ADF unit.	Replace the ADF unit.	None

Table 3.15

5.2.2.14 *Frequent double feed and skew*

Cause	Relevant Unit	Check Method	Maintenance Method	Remark
Paper setting failure	Operation error	Is the paper correctly set in the paper chute?	Teach users to properly position the paper	None
Paper failure	Operation error	Is the specified paper used	None	None
ADF connector slip-off	ADF unit	Visual check of motor rotation	Connect the connector.	None
Pad assembly failure	Pad assembly	Check the pad assembly for wear and tear.	Replace the pad assembly/ touch spring unit.	None
ADF unit failure	ADF unit	Replace the ADF unit.	Replace the ADF unit.	None

Table 3.16

5.2.2.15 *Strange sound generated (ADF)*

Cause	Relevant Unit	Check Method	Maintenance Method	Remark
Paper setting failure	Operation error	Is the paper correctly set in the paper chute?	Teach users to properly position the paper	None
paper failure	Operation error	Is the specified paper used?	None	None
ADF connector slip-off	ADF unit	Visual check of motor rotation	Connect the connector.	None
ADF unit failure	ADF unit	Replace the ADF unit	Replace the ADF unit.	None

Table 3.17

6. DISASSEMBLY

- 6.1 Service Tools
- 6.2 Lubricants
- 6.3 Procedure for Disassembly and Reassembly

6.4 Service Tool

Table 6.1 describes the maintenance tools necessary for the maintenance of this equipment.

No.	Name	Description
1	Minus screwdriver	Idler pulley module screw
2	Philips screwdriver (magnetic)	Nominal No.2 M3, M4
3	Oil	Shell "Terrace Oil 46"
4	Grease	Shell "Alvania Grease No.2"
5	Alcohol (Isopropyl 91% >)	Cleaning
6	Digital voltmeter	With 0.01 V range
7	Oscilloscope	100 MHz or more with external sweep
8	Blower	Cleaning

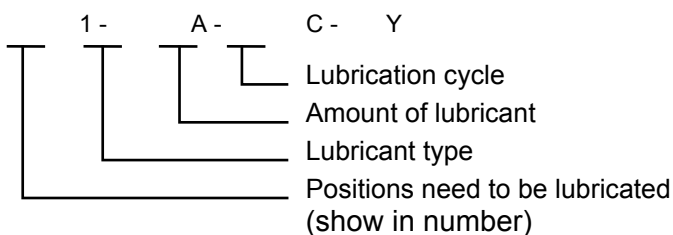
Table 6.1 Maintenance tools

6.5 Lubricants

This section describes the items to check and the places to lubricate when maintenance parts are replaced.

6.5.1 Mechanical Unit Lubrication

This lubrication method:



1. Positions need to be lubricated:
The positions need to be lubricated is indicated in numbers.
2. Lubricant type:
A: Shell Alvania Grease No. 2
B: Shell Terrace Oil 46
3. Amount of lubricant:
C: Coat thinly uniformly
4. Lubrication cycle:
Y: Every year

Table 6.2 below shows the position to be lubricated.

Lubrication Position	Lubricant Type	Lubricant Amount	Lubrication Cycle	Lubrication Position
1	B	C	Y	Sliding rod
2	A	C	Y	Sliding frame

Table 6.2

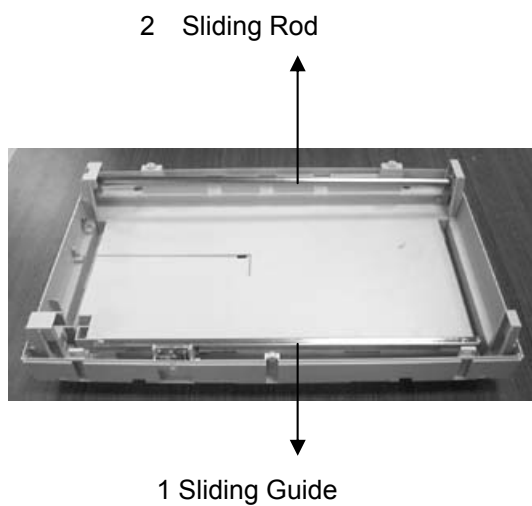


Figure 6.1 Lubricated Position

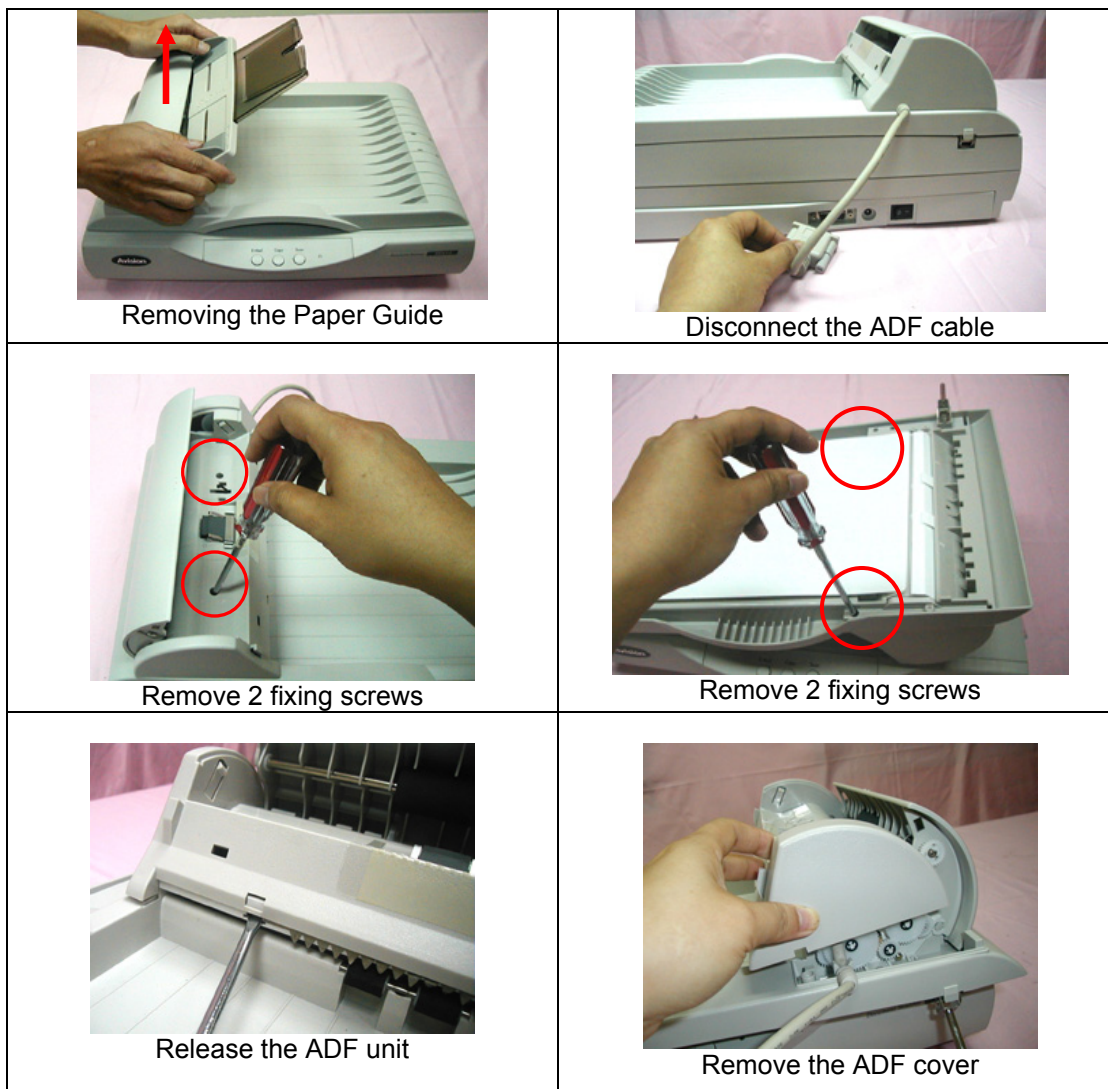
6.6 Procedure for disassembly and reassembly

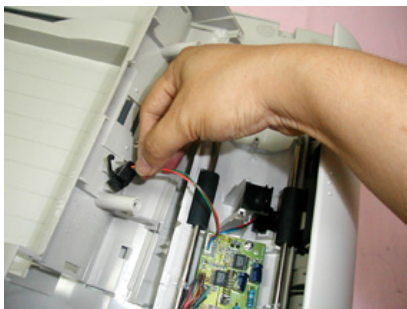
6.6.1 Notes on disassembly

- (1) Clean the disassembly and assembly location.
- (2) Disconnect the power cable and remove the AC plug from the outlet before disassembly and assembly.
- (3) Follow the disassembly and assembly procedures. Never loosen the screws of parts that must not be disassembled.
- (4) Store the disassembled parts in a clean place to avoid loss.
- (5) After replacement, check the contacts and spare part mounting.
- (6) Assemble the parts in reverse order of disassembly procedure.

6.6.2 Removing the ADF unit

- (1). Hold two sides of the paper guide with two hands and lift one side first to remove it.
- (2). Unplug the ADF cable. Open the ADF front door, remove 2 fixing screws on the top of the ADF unit.
- (3). Turn the ADF unit upside down. Remove other fixing screws on the ADF unit. Attach the ADF unit to the scanner.
- (4). Insert the top of a flat screw driver to the holes to release the ADF unit.
- (5). Remove the ADF cover and disconnect the LP sensor cable.
- (6). Remove the fixing screws on two sides. Release the ADF cable and remove the ADF front door.

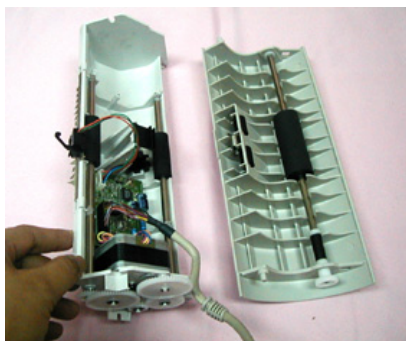




Disconnect the LP sensor



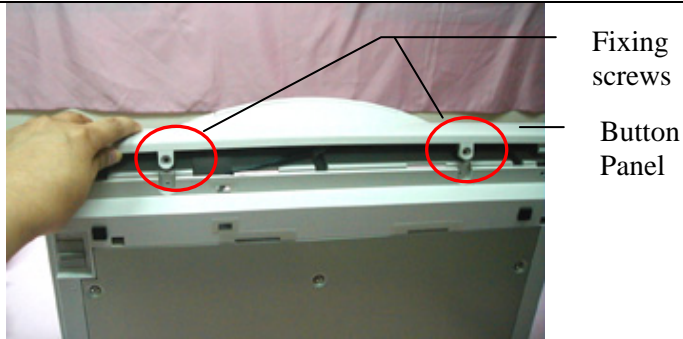
Remove 2 fixing screws



Remove the ADF front door

6.6.3 Removing the Button Panel

- (1) Turn the scanner as illustrated below.
- (2) Remove the fixing screws of the button panel.
- (3) Raise the button panel from the rear side.
- (4) Disconnect the cable to remove the button panel.



Remove the fixing screws and raise the button panel



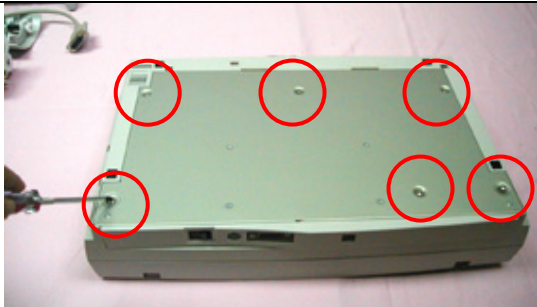
Disconnect the button panel cable



Button Panel

6.6.4 Removing the Main Control Board

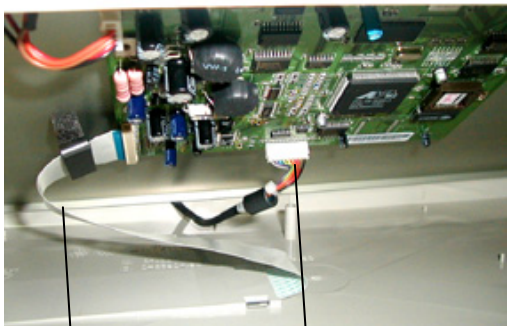
- (1) Turn the scanner upside down.
- (2) Remove 6 fixing screws on the metal plate.
- (3) Raise the front side of the metal plate with the connection ports, disconnect the button cable and the flat cable.
- (4) Remove the main board.



Remove 6 fixing screws



Raise one side of the main board



The flat
cable

The main
board cable

Disconnect cables



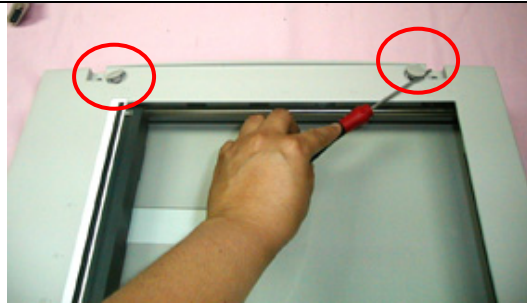
The main board

6.6.5 Removing the Upper Housing

- (1) Remove one fixing screw on the front of the scanner.
- (2) Remove 2 rubber pads on the rear of the document glass.
- (3) Remove 2 fixing screws beneath the rubber pads.
- (4) Raise the upper housing from the rear to remove the upper housing.



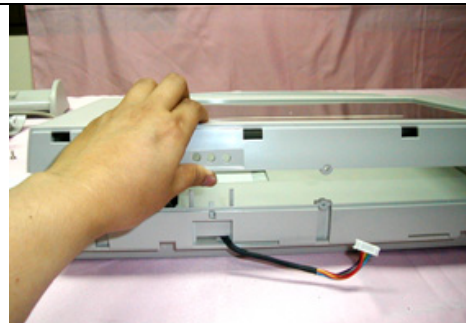
Remove one front fixing screw



Remove 2 rubber pads



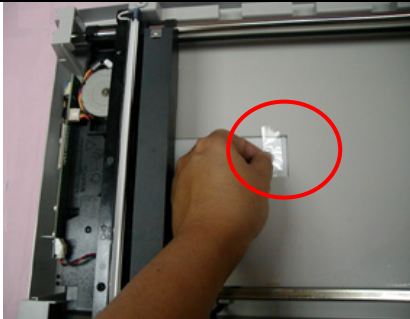
Remove 2 screws beneath the pads



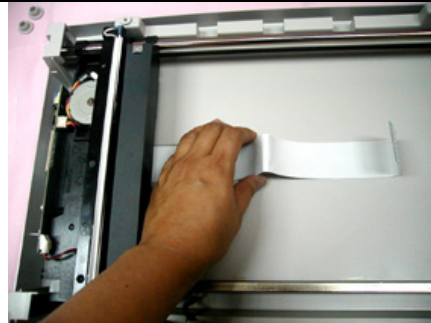
Raise the upper housing

6.6.6 Remove the Optical Chassis

- (1) Remove the transparent plastic plate used to fix the flat cable.
- (2) Pull out the flat cable out of the bottom plate.
- (3) Remove the belt spring from the hinge and then the end of belt from the scanner.
- (4) Raise the front of the sliding rod to remove it from the optical chassis.
- (5) Remove the optical chassis.



Remove the plastic pad



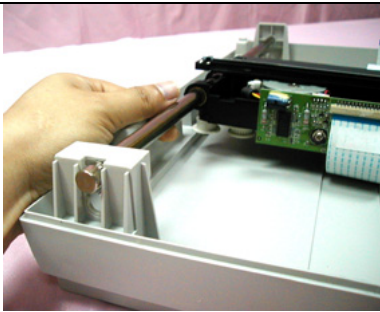
Remove the flat cable



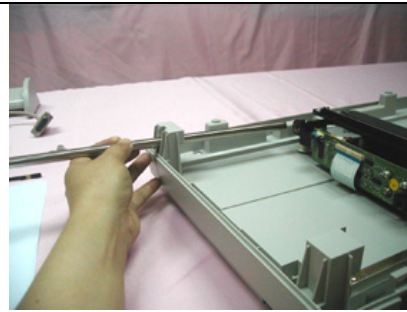
Remove the belt spring from the hinge



Remove the end of belt from the hinge



Raise the front of the sliding rod



Remove the sliding rod



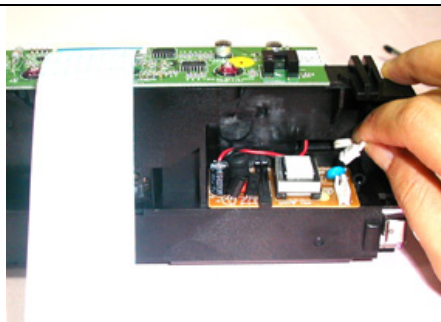
The optical chassis

Note:

- While installing the belt during assembling, insert the smooth side of the belt to the smooth side of the gear and insert the indented side of the belt to the indented side of the gear.
- Do not remove the flat cable from the optical chassis as the flat cable need special tool to reinstall it.
- Any unauthorized action may cause unexpected result and will therefore not be responsible by the manufacturer.

6.6.7 Removing the Lamp Assembly

- (1) Remove the optical chassis. (See the previous section.)
- (2) Turn over the optical chassis to make the PCBA face up.
- (3) Disconnect the lamp cable.
- (4) Turn over the optical chassis to make the lamp face up.
- (5) Loosen 2 fixing screw to remove the lamp assembly.



Disconnect the cable



Loosen 2 fixing screws



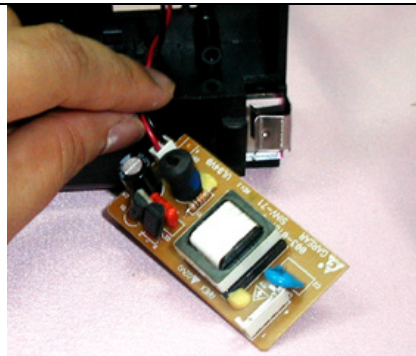
The lamp assembly

6.6.8 Removing the Inverter

- (1) Turn the optical chassis with the PCBA facing up.
- (2) Loosen the plastic fixing plate on the inverter.
- (3) Disconnect the inverter cable.
- (4) Remove the inverter.



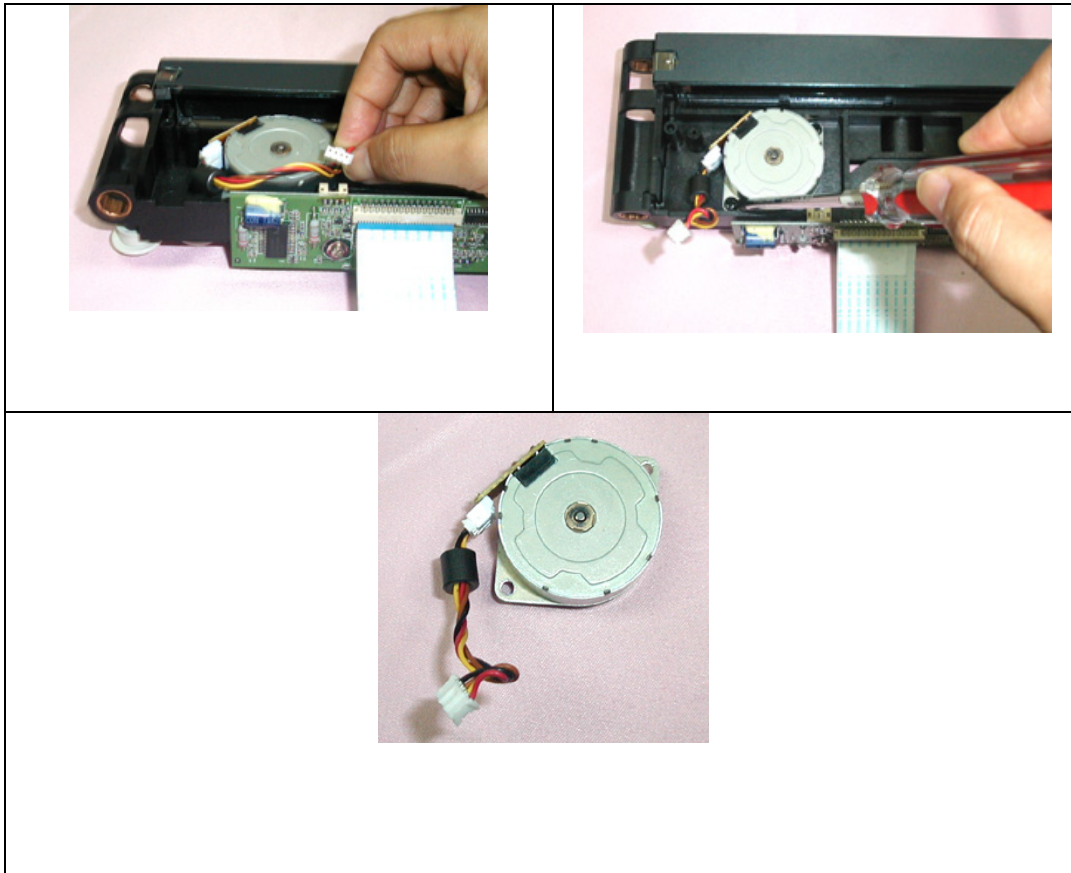
Loosen the inverter from the plastic plate



Remove the inverter cable

6.6.9 Removing the Motor Unit

- (1) Disconnect the motor cable.
- (2) Loosen 2 fixing screws to remove the motor.



6.6.10 Replacing the ADF Snap-in Pad Module

After scanning approximately 50,000 pages through the ADF, the pad may be worn out and you may experience problems with document feeding. In this case, it is highly recommended that you replace the pad module with a new one. To order a pad module, please consult your nearest dealer and follow the procedure below to replace it.

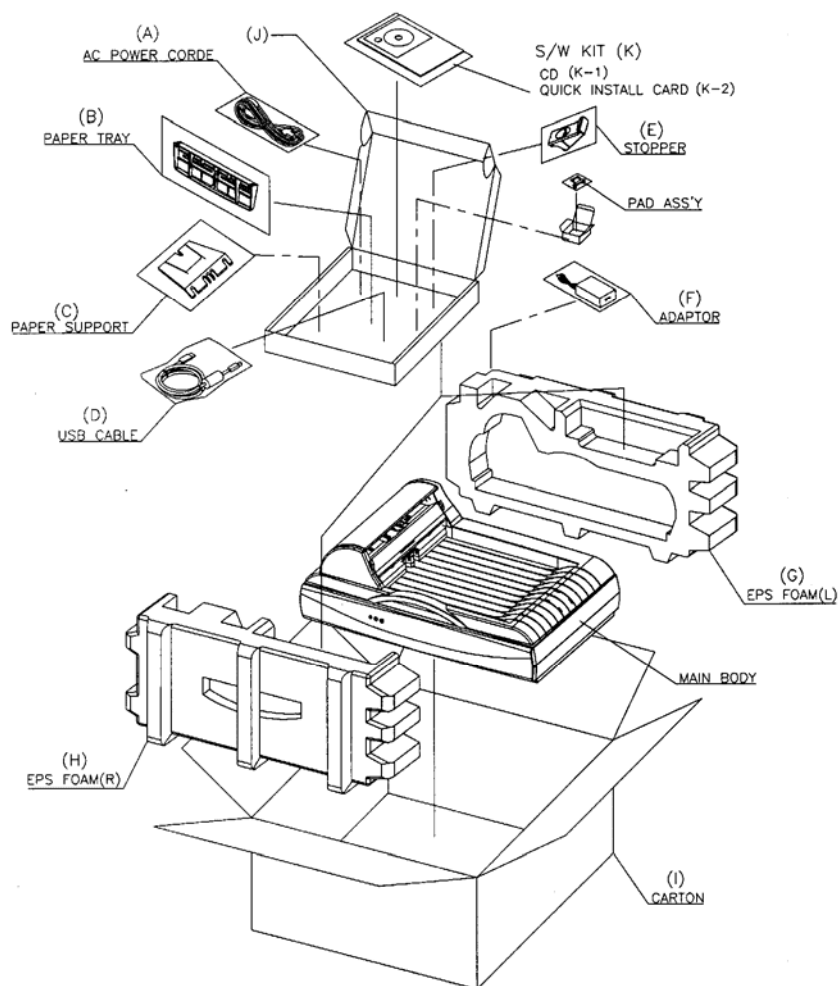
1. Gently open the ADF front cover to the left.
2. Press both arms of the ADF snap-in pad module inwardly with your two fingers to pull out the ADF snap-in pad module.

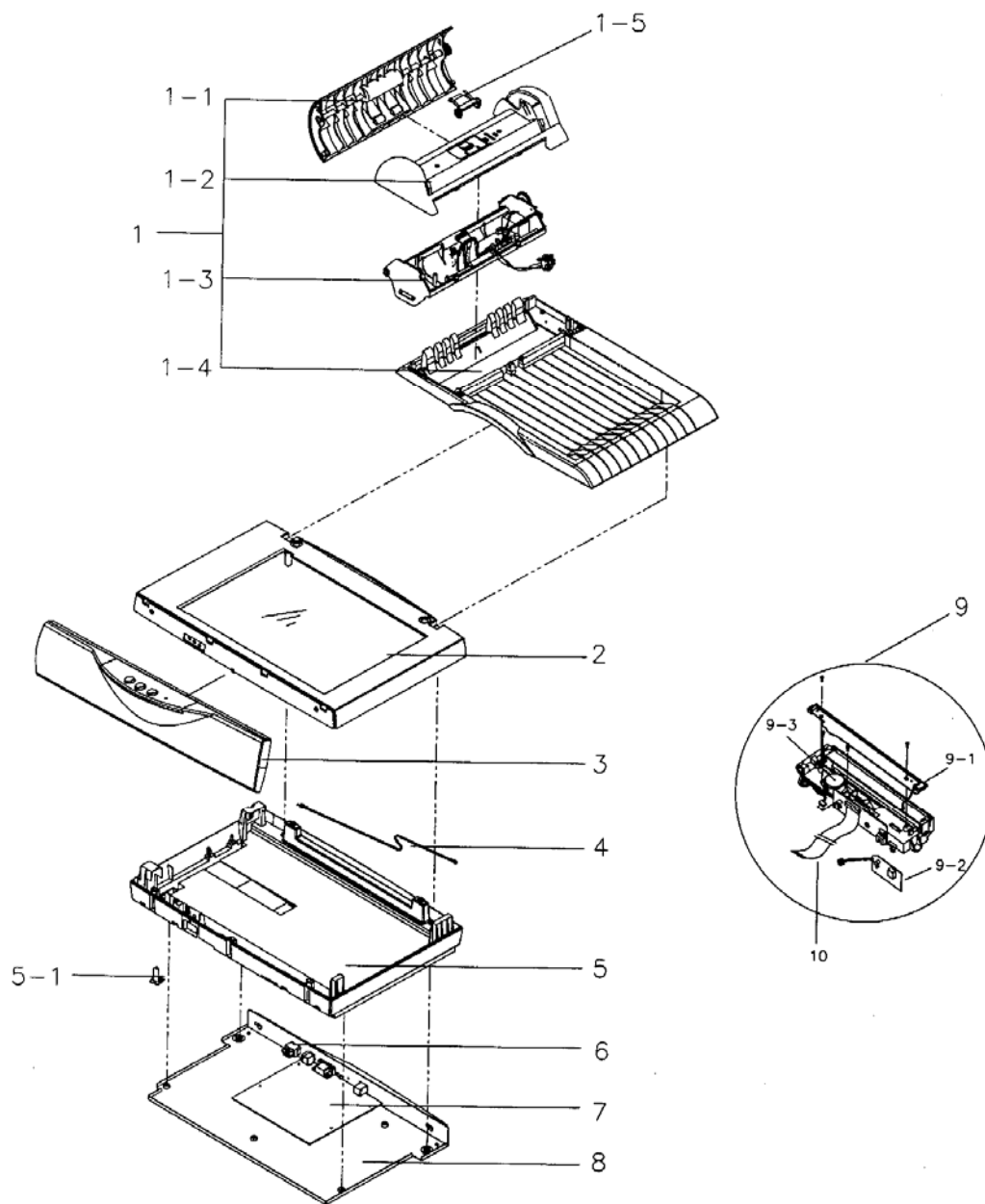


7. PARTS

8.1 Spare Part Diagram/Table

7.1 Spare part diagram





ITEM	P/N	REV.	DESCRIPTION	ORDER Q'TY
ADF PARTS				
1	002-1446-0-SP	010	S-PARTS: ASS'Y, ADF DOCUMENT	1
1-1	002-1285-0-SP	100	S-PARTS: ASS'Y , FRONT CASE	1
1-2	051-0822-0-SP	100	S-PARTS: COVER, UPPER: 272x117x66, ABS, 012-0038-0	1
1-3	002-1445-0-SP	010	S-PARTS: ASS'Y, MAIN CASE	1
1-4	002-1671-0-SP	100	S-PARTS: ASS'Y, BOTTOM OF ADF MODULE,	1
1-5	002-1193-0-SP	400	S-PARTS: ADF PAD ASS'Y	1
FLATBED PARTS				
2	002-1165-0-SP	100	S-PARTS: UPPER HOUSING ASS'Y	1
3	002-1613-0-SP	100	S-PARTS: ASS'Y, FRONT COVER, FLATBED	1
4	003-2178-0-SP	100	S-PARTS: ASS'Y, BELT	1
5	002-0956-0-SP	100	S-PARTS: ASS'Y, BOTTOM HOUSING	1
5-1	051-1035-0-SP	100	S-PARTS: LOCK: 24x20x30mm, PC, GRAY	1
6	003-0212-0-SP	100	S-PARTS: POWER SWITCH/SOCKET UNIT	1
7	003-5519-0-SP	100	S-PARTS: PCBA, MB169+F/W	1
8	054-0366-0-SP	100	S-PARTS: MOUNT, PCBA-U, 232x413x32.5, SECC, MB169	1
9	002-1449-0-SP	100	S-PARTS: ASS'Y, OPTICAL, 600 GEAR RATIO	1
9-1	002-1771-0-SP	100	S-PARTS: ASS'Y, LAMP	1
9-2	003-0432-0-SP	100	S-PARTS: INVERTER, 24Vdc, 7mA, 45KHz, DC WIRE W/CORE	1
9-3	065-0088-0-SP	100	S-PARTS: MOTOR, STEPPING, Bipolar, 24VDC, 3.75°,	1
10	104-0246-0-SP	100	S-PARTS: FLEXIBLE FLAT CABLE, 32P, P=1.0, T=0.035	1
OTHERS				
A	104-0080-0-SP	100	S-PARTS: AC POWER CORD, USA, 2-PIN, 7A/125V, 1.8m	1
B	002-1177-0-SP	100	S-PARTS: PAPER TRAY	1
C	002-0777-0-SP	100	S-PARTS: ASS'Y, PAPER SUPPORT	1
D	104-0255-0-SP	100	S-PARTS: USB 2.0 CABLE, SHIELDING, L=1.83m, 28AWG	1
E	002-1178-0-SP	100	S-PARTS: STOPPER ASS'Y	1
F	003-0407-0-SP	100	S-PARTS: ADAPTER, 100~240Vac, 24Vdc/1.25A, 30W, 2P	1
G	072-0143-0	200	EPS FOAM: (L), 575x250x100	1
H	072-0278-0	010	EPS FOAM(R): 575x250x100mm	1

I	073-1033-0	010	CARTON: 592x400x285mm, AB/F	1
J	073-0590-0	200	ACCESSORY BOX : 280x245x48 , B/F	1
K	003-2245-0	010	S/W PACKAGE: DOCUMATE 520	1
K-1	006-0210-0	010	CD: DOCUMATE 520	1
K-2	251-0226-0	010	QUICK GUIDE : DOCUMATE 520	1

Table 8.1 Spare Parts Table