



MINOLTA

# Parts Manual

The essentials of imaging

## C-403

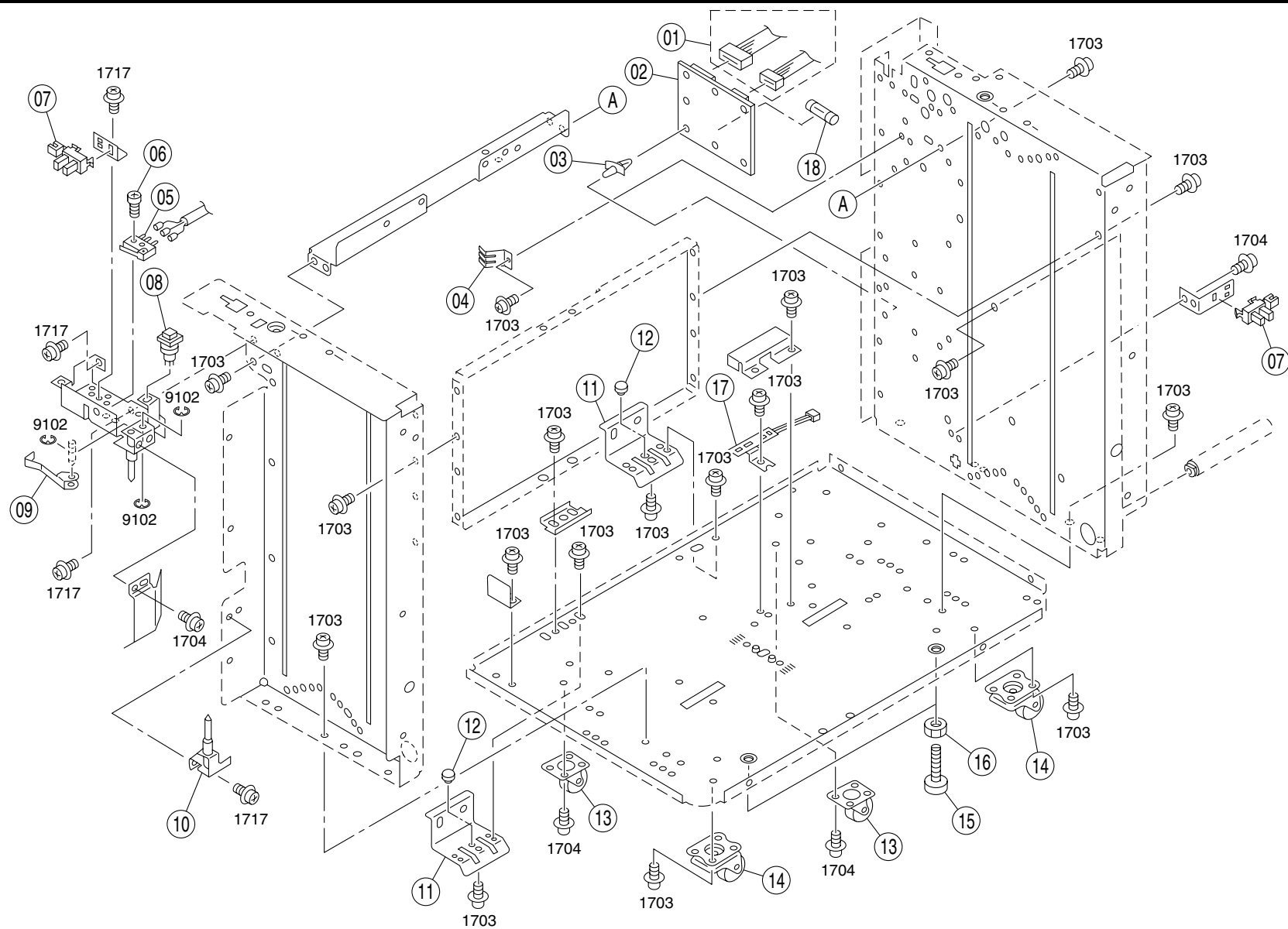
## PREFACE

1. The part numbers listed in Parts Manual are those which were assigned to the parts making up the machine at the time machine was originally introduced onto the market.
2. Parts whose INDEX numbers are shown white against a black background in the illustration are those to be used in only certain market areas. These part numbers are given in the lower half part of the list section. Check the SFIX No. listed in SFIX CHART on page II to find which part number is applicable to your own area.
3. Parts whose INDEX numbers are shown black against a white background in the illustration are those to be used in all market areas. These parts are listed on the upper half part of the list section.
4. If "NS" follows a part number given in the list section, it indicates that we do not keep a stock of the part. The part is not required for ordinary service jobs, either.
5. If "RP" is shown in the REC column of the list section, it indicates that the part is functionally important.
6. In the exploded views in this Parts Manual the parts (Screws & Washes, etc...) which are indicated with a "four-digit" numbers are listed in numerical order in the section "SCREWS AND WASHERS". Please check these "four-digit" numbers with the part numbers ("ten-digit" numbers) which should be used for ordering the part.
7. All part numbers consist of "ten-digit" which should all be quoted when ordering a part. The price of parts can be obtained by referring to the "Parts Price List" which is separately issued.
8. All information contained in this parts manual is subject to change.

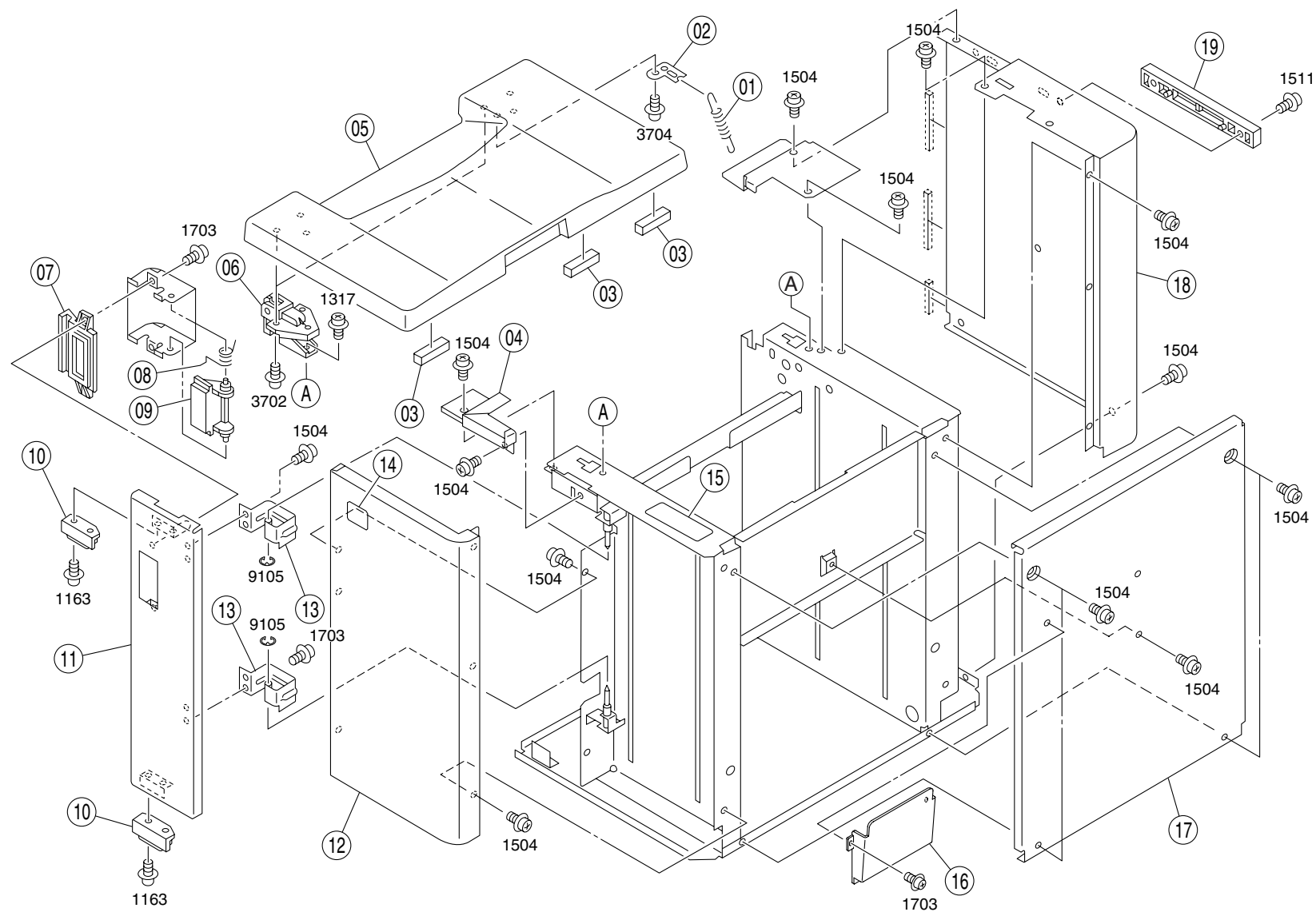
CONTENTS

1.	FRAME SECTION.....	1
2.	HOUSING .....	3
3.	DRIVE SECTION .....	5
4.	PAPER TAKE-UP SECTION (A) .....	7
5.	PAPER TAKE-UP SECTION (B) .....	9
6.	PAPER TAKE-UP SECTION (C) .....	11
7.	PAPER TAKE-UP SECTION (D) .....	13
8.	PAPER TAKE-UP SECTION (E) .....	15
9.	PAPER TAKE-UP SECTION (F) .....	17
10.	SCREWS AND WASHERS.....	19
11.	NUMERICAL INDEX .....	20

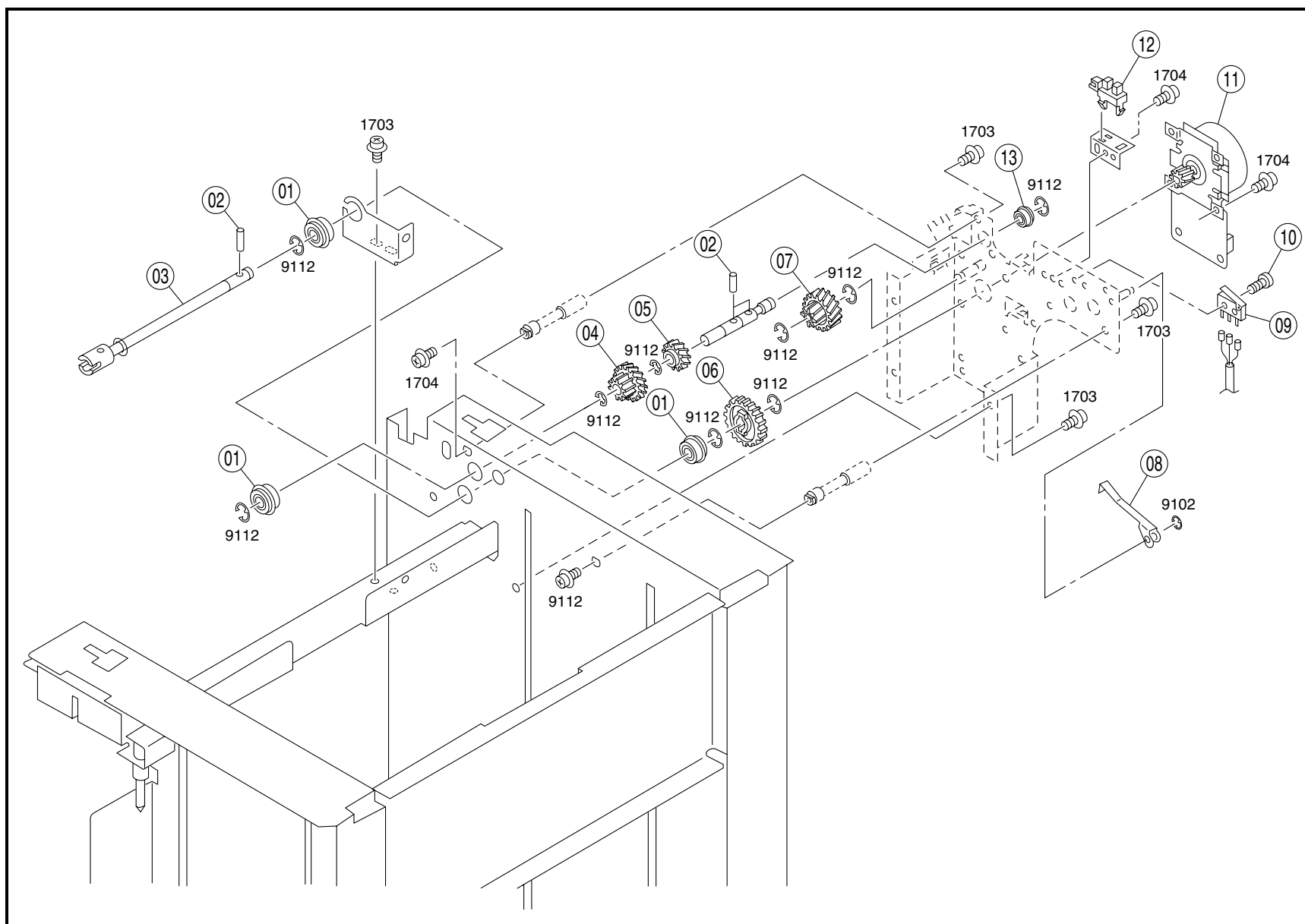
NOVEMBER 2001



INDEX	PART NO.	PART NAME	REC	QTY	INDEX	PART NO.	PART NAME	REC	QTY
01	4593-2024-01	HARNESS	RP	1					
02	4024-2011-01	LCT DRIVING BOARD ASSY		1					
03	9384-1010-31	PWB SUPPORT 11.11H		1					
04	4593-2002-01	TERMINAL		1					
05	4014-1301-01	SWITCH		1					
06	4593-2001-01	SCREW		1					
07	4014-1023-01	PHOTO INTERRUPTER		2					
08	4014-1639-01	SWITCH		1					
09	4014-1242-01	ACTUATOR		1					
10	4014-3143-01	HINGE		1					
11	4593-2006-01	STOP PLATE		2					
12	4593-2007-01	PIN		2					
13	4593-2004-01	CASTOTR		2					
14	4593-2003-01	CASTOTR		2					
15	4593-2005-01	ADJUSTING FOOT		2					
16	4014-4029-01	NUT		2					
17	4014-1638-01	HEATER	RP	1					
18	4014-2359-01	FUSE		1					
INDEX	PART NO.	PART NAME	REC	QTY	SFIX				

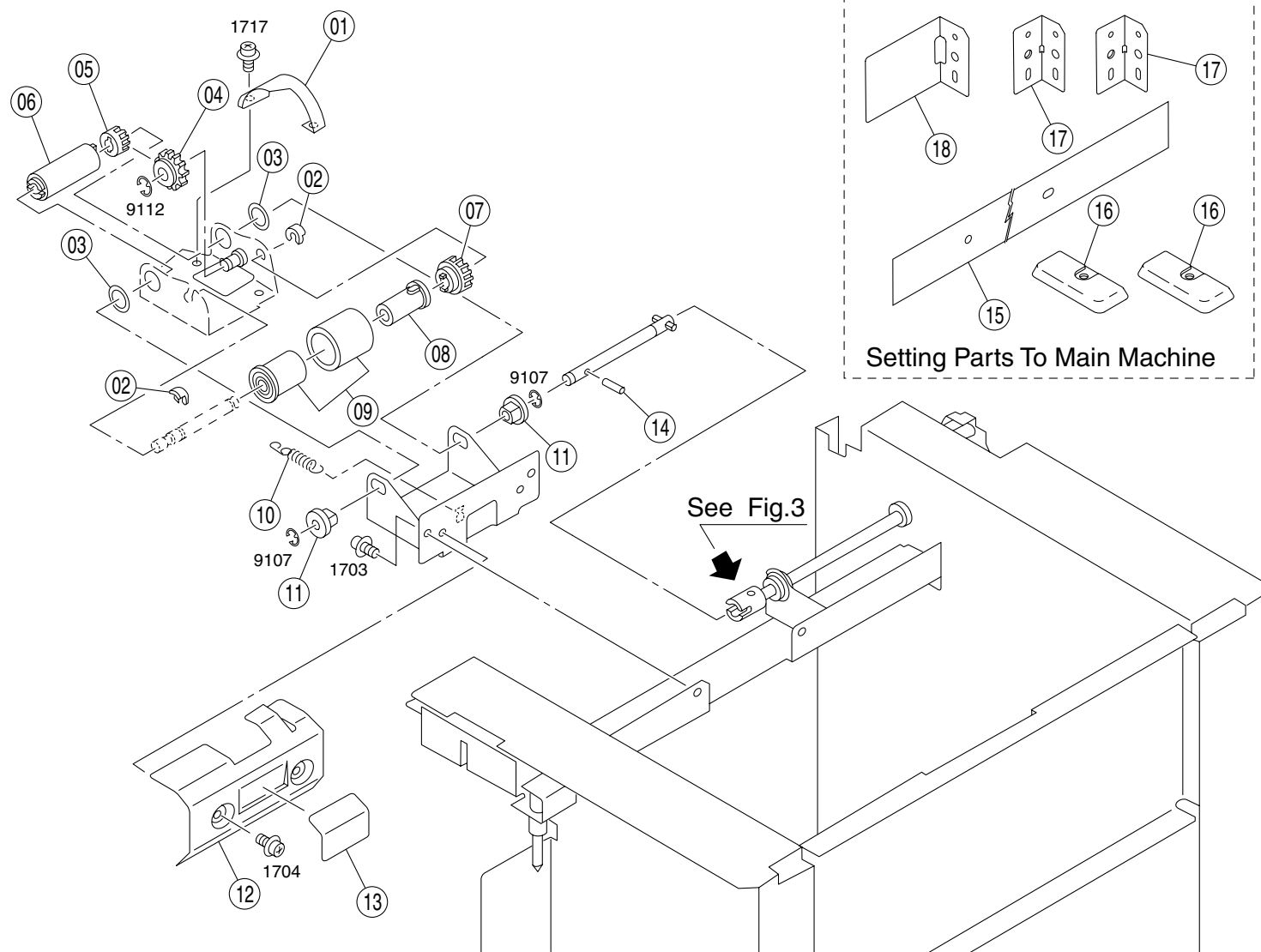


INDEX	PART NO.	PART NAME	REC	QTY	INDEX	PART NO.	PART NAME	REC	QTY
01	4014-1305-01	TENSION SPRING		1	19	4593-2016-01	HANDLE		1
02	4593-2022-01	BRACKET		1					
03	4014-1304-01	STOPPER PART		3					
04	4593-2015-01	COVER		1					
05	4024-2140-01	PAPER SUPPLY COVER		1					
06	4014-1538-01	HINGE		2					
07	4593-2017-01	COVER		1					
08	4014-1235-01	TORSION SPRING		1					
09	4593-2018-01	HANDLE		1					
10	4014-1008-01	MAGNET CATCH		2					
11	4024-2147-01	JAM OPEN/SHUT DOOR		1					
12	4024-2142-01	FRONT COVER		1					
13	4014-1232-01	HINGE		2					
14	4593-2020-01	LABEL		1					
15	4014-1565-01	LABEL PAPER SUPPLY		1					
16	4014-1858-01	COVER		1					
17	4024-2144-01	SIDE COVER/RIGHT		1					
18	4024-2145-01	REAR COVER		1					
INDEX	PART NO.	PART NAME	REC	QTY	SFIX				

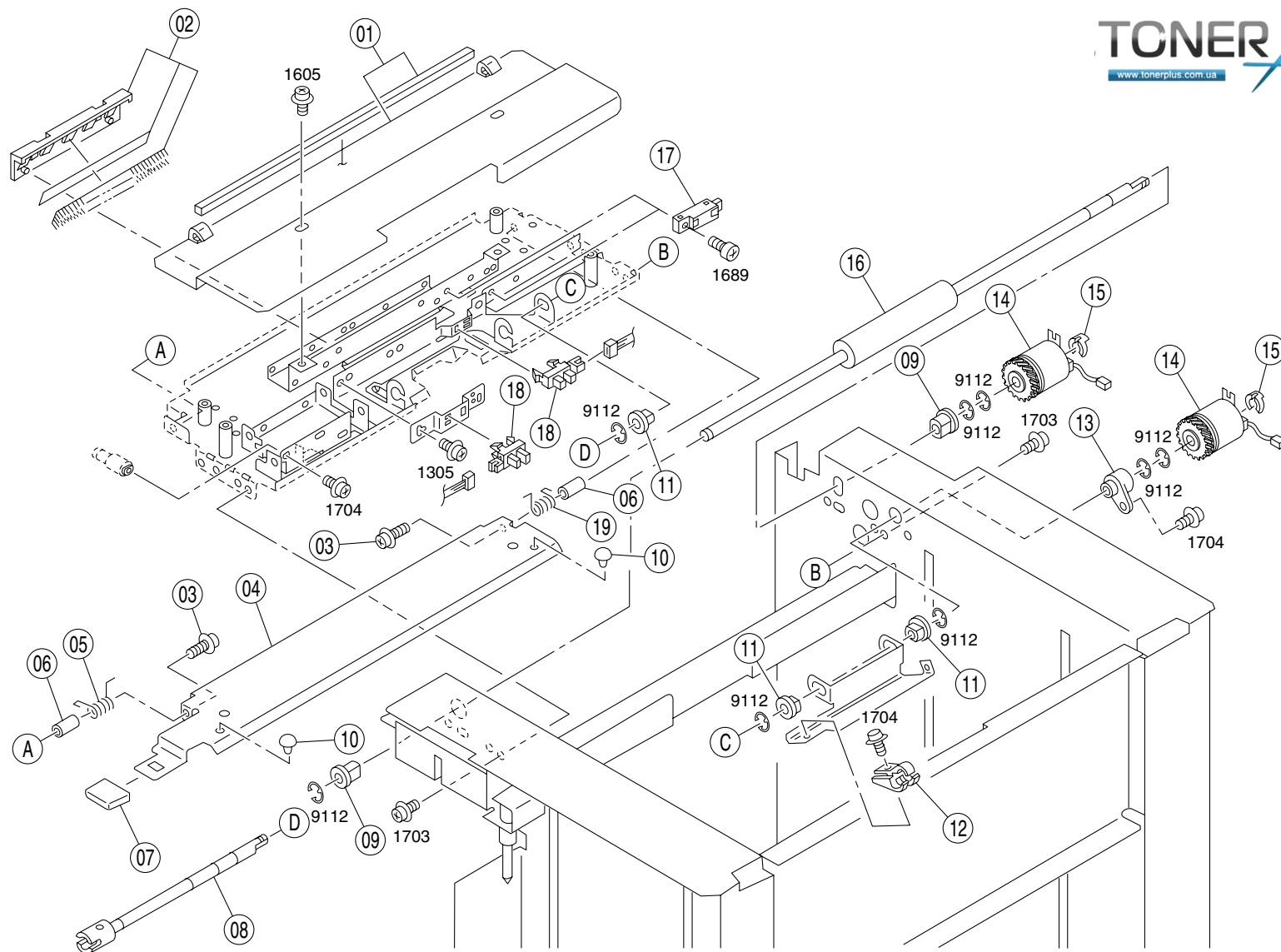




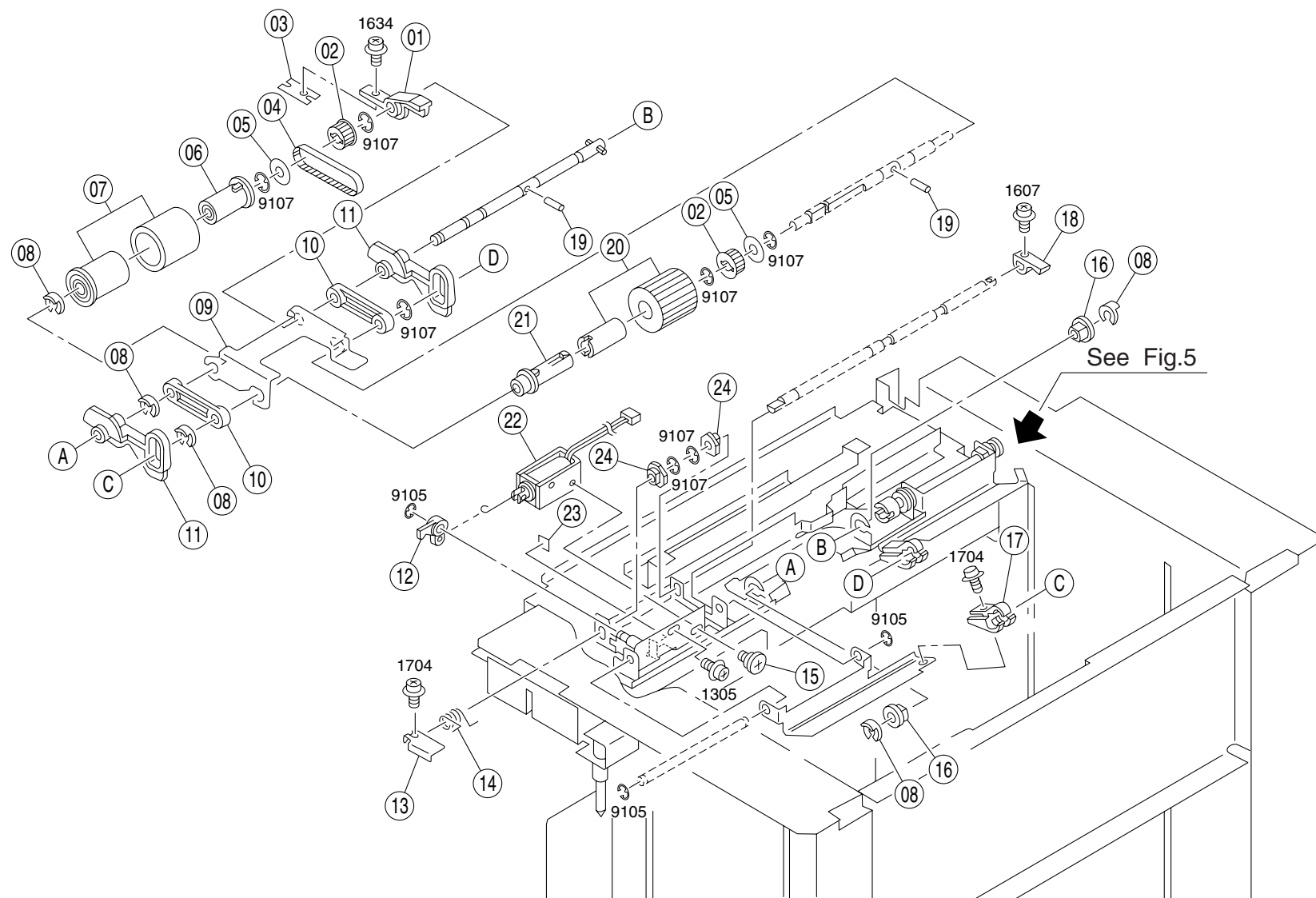
INDEX	PART NO.	PART NAME	REC	QTY	INDEX	PART NO.	PART NAME	REC	QTY
01	4014-1780-01	BUSHING		3					
02	4014-4076-01	PIN		3					
03	4014-3145-01	SHAFT		1					
04	4593-2012-01	GEAR 22/30T		1					
05	4593-2013-01	GEAR 22T		1					
06	4014-2262-01	GEAR 60T		1					
07	4593-2011-01	GEAR 27/66T		1					
08	4014-1242-01	ACTUATOR		1					
09	4014-1301-01	SWITCH		1					
10	4593-2001-01	SCREW		1					
11	4024-2025-01	DC BRUSHLESS MOTOR		1					
12	4014-1023-01	PHOTO INTERRUPTER		1					
13	4014-1624-01	BALL BEARING		1					
INDEX	PART NO.	PART NAME	REC	QTY	SFIX				



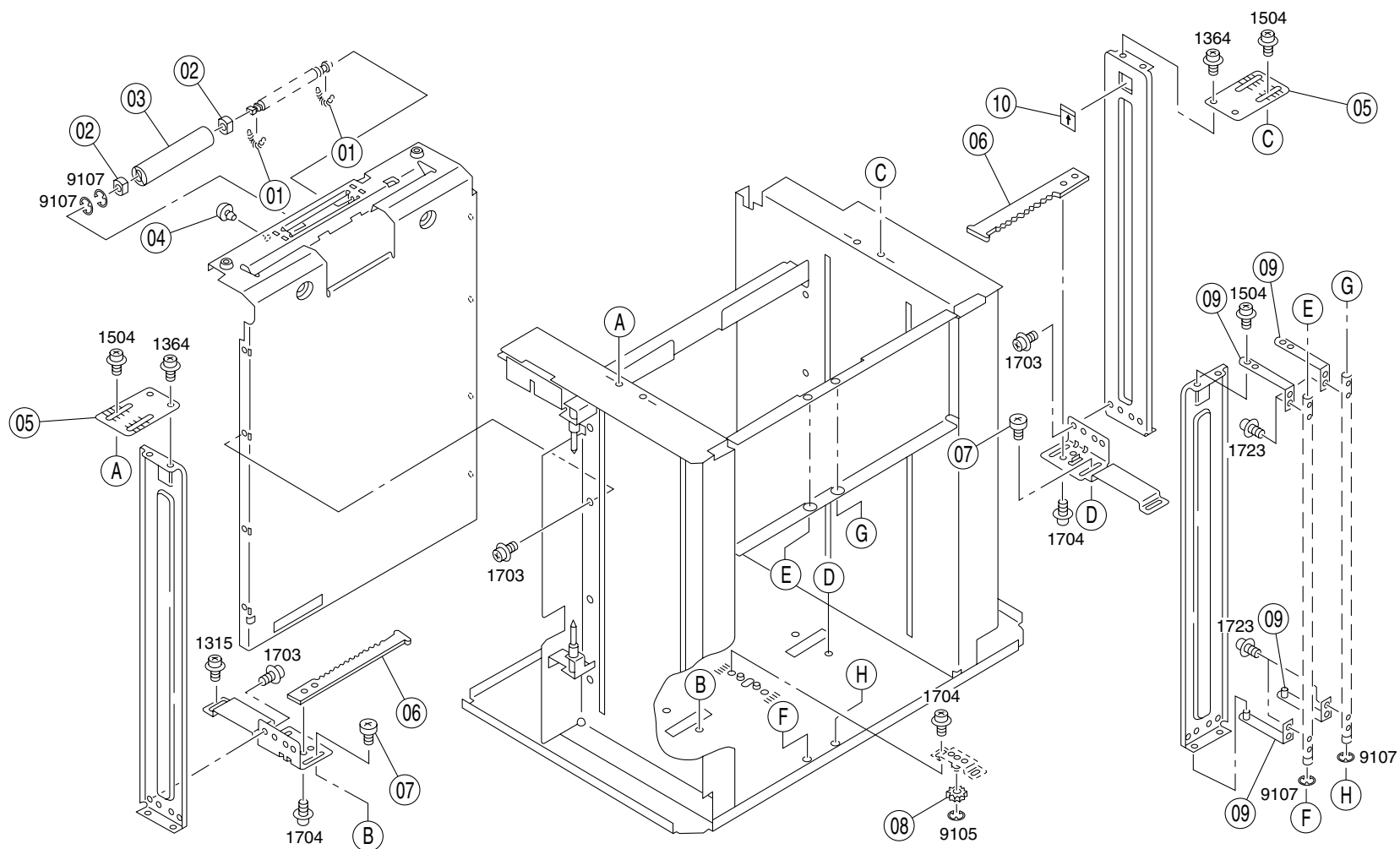
INDEX	PART NO.	PART NAME	REC	QTY	INDEX	PART NO.	PART NAME	REC	QTY
01	4593-2023-01	COVER	RP	1					
02	4014-1729-01	STOPPER RING		2					
03	4014-1579-01	SPACER		2					
04	4014-2266-01	GEAR 24T		1					
05	4014-2264-01	GEAR 14T		1					
06	4014-1792-01	TOQUE LIMITER		1					
07	4014-2273-01	GEAR 19T		1					
08	4014-1769-01	ROLLER		1					
09	4014-3028-01	ROLLER ASSY		1					
10	4014-1954-01	TENSION SPRING		1					
11	4014-1001-01	BUSHING		2					
12	4014-1547-01	GUIDE PLATE		1					
13	4014-1985-01	SHEET		1					
14	4014-1030-01	PIN		1					
15	4593-2010-01	EARTH GROUND		1					
16	4593-2014-01	COVER		2					
17	4593-2009-01	EARTH GROUND		2					
18	4593-2008-01	EARTH GROUND		1					
INDEX	PART NO.	PART NAME	REC	QTY	SFIX				



INDEX	PART NO.	PART NAME	REC	QTY	INDEX	PART NO.	PART NAME	REC	QTY
01	4593-2019-01	COVER ASSY	RP	1	19	4014-1551-01	TORSION SPRING		1
02	4014-3219-01	DUST REMOVER		1					
03	4014-4019-01	SCREW		2					
04	4593-2025-01	GUIDE PLATE		1					
05	4014-1552-01	TORSION SPRING		1					
06	4014-1602-01	COLLAR		2					
07	4014-1607-01	HANDLE		1					
08	4014-3146-01	SHAFT		1					
09	4014-2173-01	BUSHING		2					
10	4014-1007-01	STOPPER RUBBER		2					
11	4014-1026-01	BUSHING		3					
12	4014-1582-01	HOLDER		1					
13	4014-2012-01	BUSHING		1					
14	4024-1028-01	PAPER FEED DRIVING CLUT		2					
15	4014-1995-01	SHAFT STOPPER		2					
16	4014-1546-01	ROLLER		1					
17	4024-2099-01	PHOTO INTERRUPTER		2					
18	4014-1023-01	PHOTO INTERRUPTER		2					
INDEX	PART NO.	PART NAME	REC	QTY	SFIX				

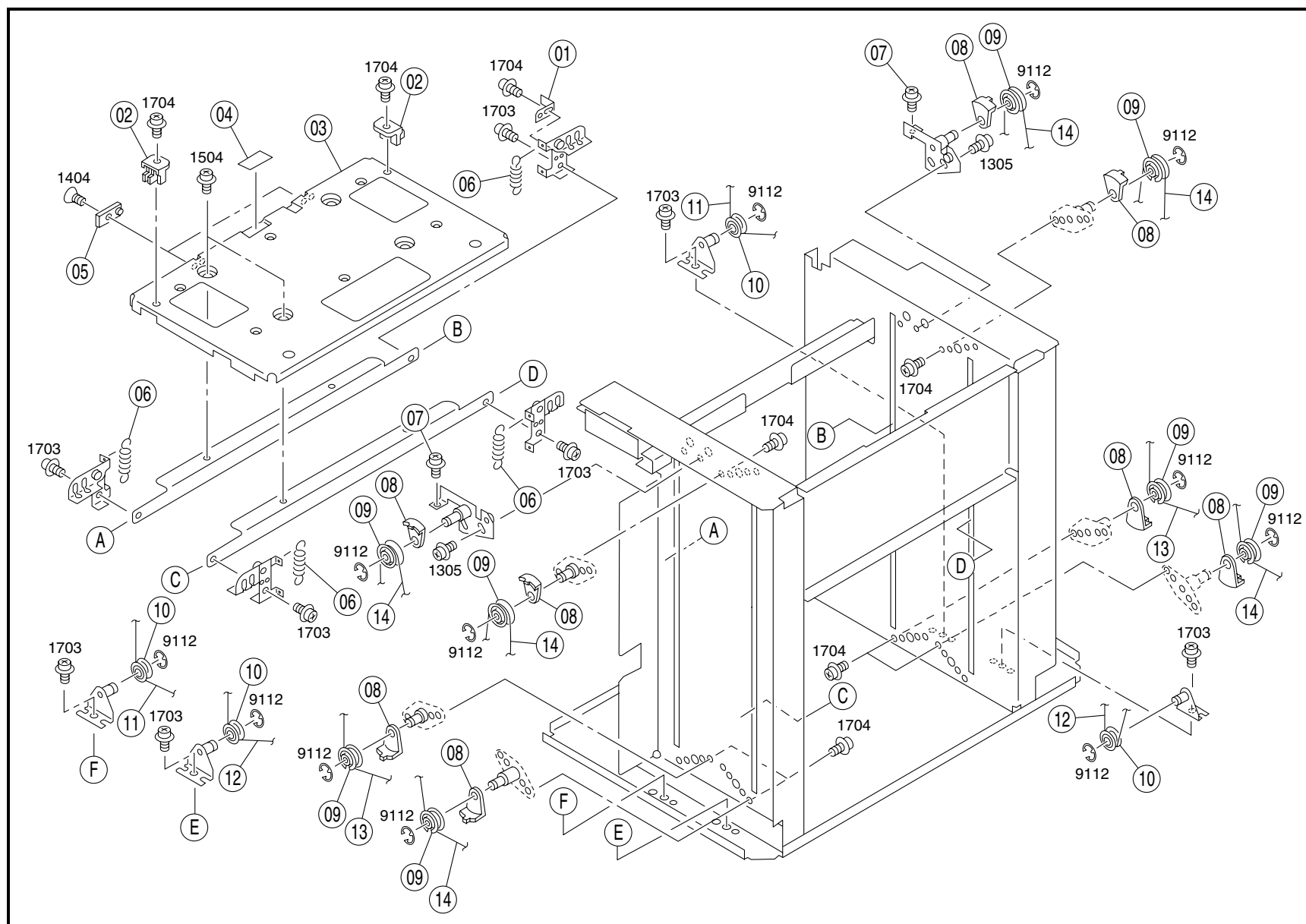



INDEX	PART NO.	PART NAME	REC	QTY	INDEX	PART NO.	PART NAME	REC	QTY
01	4014-1952-01	LIFTUP LEVER	RP	1	19	4014-1735-01	PIN	RP	2
02	4014-1009-01	PULLEY		2	20	4014-3029-01	ROLLER ASSY		1
03	4014-1980-01	PLATE		1	21	4014-1946-01	ROLLER		1
04	4014-1694-01	BELT		1	22	4014-3221-01	SOLENOID ASSY		1
05	4014-1572-01	WASHER		2	23	4014-1994-01	SHEET		1
06	4014-1947-01	ROLLER		1	24	4014-1754-01	BUSHING		2
07	4014-3028-01	ROLLER ASSY		1					
08	4014-1729-01	STOPPER RING		5					
09	4014-1554-01	HOLDER		1					
10	4014-1953-01	HOLD PLATE		2					
11	4014-1982-01	ACTUATOR		2					
12	4014-1583-01	LEVER		1					
13	4014-1553-01	PLATE		1					
14	4014-1550-01	TORSION SPRING		1					
15	4014-1997-01	POSITIONING SCREW		1					
16	4014-1308-01	BUSHING		2					
17	4014-1582-01	HOLDER		1					
18	4014-1959-01	LEVER		1					
INDEX	PART NO.	PART NAME	REC	QTY	SFIX				

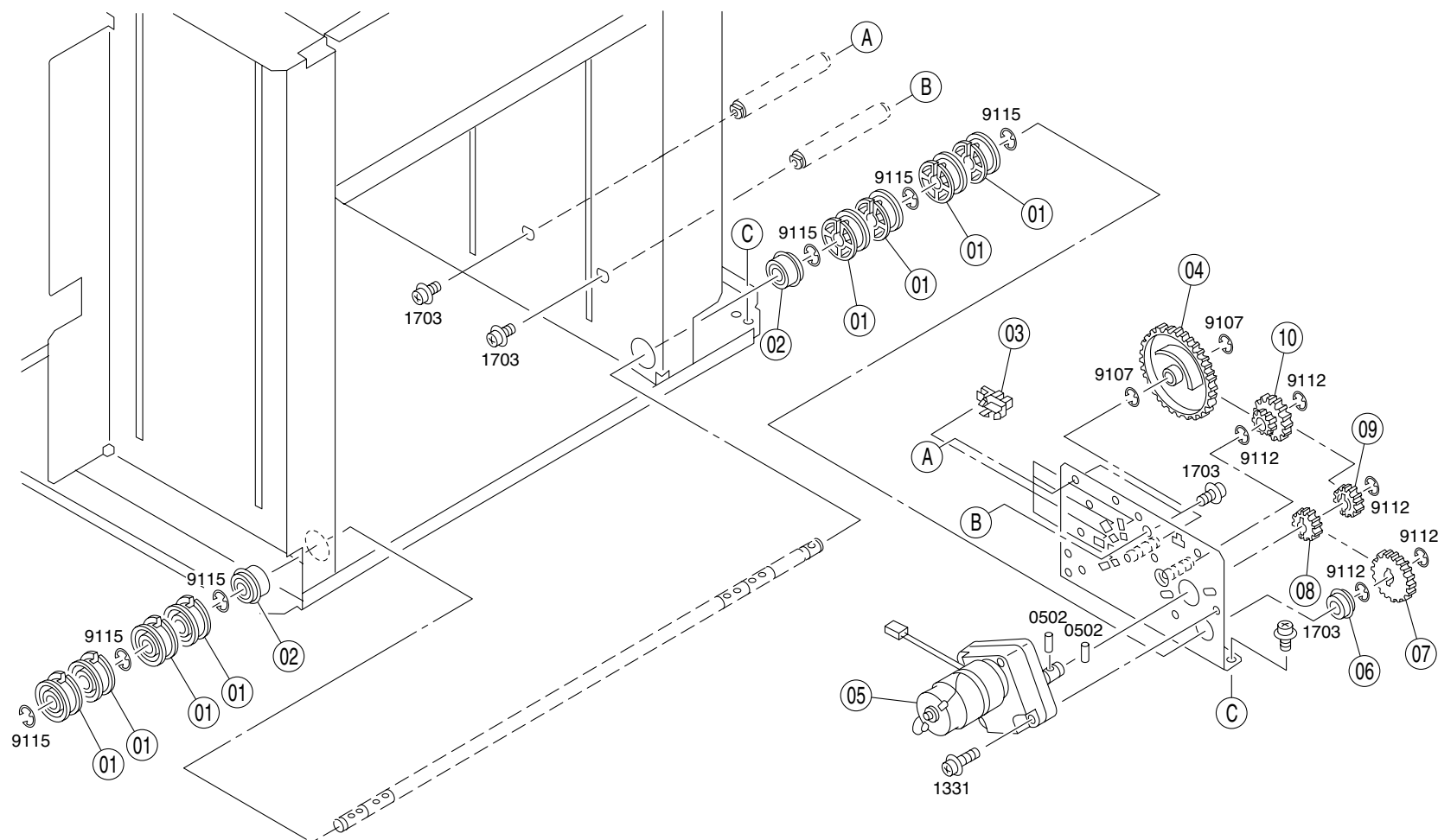













INDEX	PART NO.	PART NAME	REC	QTY	INDEX	PART NO.	PART NAME	REC	QTY
01	4014-2049-01	TENSION SPRING		2					
02	4014-1625-01	BUSHING		2					
03	4014-1949-01	ROLLER		1					
04	4014-1237-01	STOPPER RUBBER		1					
05	4014-1558-01	POSITIONING PLATE		2					
06	4014-1649-01	RACK GEAR		2					
07	4014-1571-01	SHOULDER SCREW		4					
08	4014-1651-01	GEAR 14T		1					
09	4014-3147-01	BRACKET		4					
10	4014-1644-01	LABEL MAX		1					
INDEX	PART NO.	PART NAME	REC	QTY	SFIX				



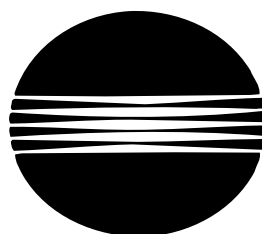
INDEX	PART NO.	PART NAME	REC	QTY	INDEX	PART NO.	PART NAME	REC	QTY
01	4014-2025-01	PLATE	RP	1					
02	4014-1559-01	HOLDER		2					
03	4014-1556-01	LIFTING PLATE		1					
04	4014-1977-01	SHEET		1					
05	4014-1015-01	SPACER PLATE		2					
06	4014-1593-01	TENSION SPRING		4					
07	4014-4010-01	SCREW		2					
08	4014-1585-01	HOLDER		8					
09	4014-1584-01	PULLEY		8					
10	4014-1592-01	WIRE PULLEY		4					
11	4014-1543-01	WIRE		2					
12	4014-1544-01	WIRE		2					
13	4014-1542-01	WIRE		2					
14	4014-1541-01	WIRE		6					
INDEX	PART NO.	PART NAME	REC	QTY	SFIX				
<div><div>TONER</div><div>www.tonerplus.com.ua</div></div> 									



INDEX	PART NO.	PART NAME	REC	QTY	INDEX	PART NO.	PART NAME	REC	QTY
01	4014-1540-01	PULLEY		8					
02	4014-1012-01	BALL BEARING		2					
03	4014-1023-01	PHOTO INTERRUPTER		4					
04	4014-1560-01	GEAR 92T		1					
05	4014-1564-01	MOTOR		1					
06	4014-1780-01	BUSHING		1					
07	4014-1634-01	GEAR		1					
08	4014-1562-01	GEAR		1					
09	4014-1561-01	GEAR 22T		1					
10	4014-1029-01	SLOW DOWN GEAR		1					
INDEX	PART NO.	PART NAME	REC	QTY	SFIX				

INDEX	PART NO.	PART NAME	ILLUST	INDEX	PART NO.	PART NAME	ILLUST	INDEX	PART NO.	PART NAME	ILLUST
0502	9752-3012-50	PIN									
1163	9642-0406-13	SCREW									
1305 1315 1317 1331 1364	9646-0306-13 9646-0406-13 9646-0408-07 9646-0325-13 9646-0408-01	SCREW									
1404	9648-0306-13	SCREW									
1504 1511	9652-0406-01 9652-0408-01	SCREW									
1605 1607 1634 1689	9654-0306-03 9654-0306-13 9654-0304-13 9654-0310-13	SCREW									
1703 1704 1717 1723	9737-0406-13 9737-0306-13 9737-0304-13 9737-0308-13	SCREW									
3702 3704	9739-0410-13 9739-0308-13	TAPPING SCREW									
9102 9105 9107 9112 9115	9721-0200-01 9721-0300-01 9721-0400-01 9721-0600-01 9721-0800-01	RETAINING RING									

PART NO.	FIG.	INDEX	QTY		PART NO.	FIG.	INDEX	QTY		PART NO.	FIG.	INDEX	QTY		PART NO.	FIG.	INDEX	QTY	
4014-1001-01	04	11	2		4014-1780-01	03	01	3		4593-2022-01	02	02	1						
4014-1007-01	05	10	2		4014-1780-01	09	06	1		4593-2023-01	04	01	1						
4014-1008-01	02	10	2		4014-1792-01	04	06	1		4593-2024-01	01	01	1						
4014-1009-01	06	02	2		4014-1858-01	02	16	1		4593-2025-01	05	04	1						
4014-1012-01	09	02	2		4014-1946-01	06	21	1		9384-1010-31	01	03	1						
4014-1015-01	08	05	2		4014-1947-01	06	06	1											
4014-1023-01	01	07	2		4014-1949-01	07	03	1											
4014-1023-01	03	12	1		4014-1952-01	06	01	1											
4014-1023-01	05	18	2		4014-1953-01	06	10	2											
4014-1023-01	09	03	4		4014-1954-01	04	10	1											
4014-1026-01	05	11	3		4014-1959-01	06	18	1											
4014-1029-01	09	10	1		4014-1977-01	08	04	1											
4014-1030-01	04	14	1		4014-1980-01	06	03	1											
4014-1232-01	02	13	2		4014-1982-01	06	11	2											
4014-1235-01	02	08	1		4014-1985-01	04	13	1											
4014-1237-01	07	04	1		4014-1994-01	06	23	1											
4014-1242-01	01	09	1		4014-1995-01	05	15	2											
4014-1242-01	03	08	1		4014-1997-01	06	15	1											
4014-1301-01	01	05	1		4014-2012-01	05	13	1											
4014-1301-01	03	09	1		4014-2025-01	08	01	1											
4014-1304-01	02	03	3		4014-2049-01	07	01	2											
4014-1305-01	02	01	1		4014-2173-01	05	09	2											
4014-1308-01	06	16	2		4014-2262-01	03	06	1											
4014-1538-01	02	06	2		4014-2264-01	04	05	1											
4014-1540-01	09	01	8		4014-2266-01	04	04	1											
4014-1541-01	08	14	6		4014-2273-01	04	07	1											
4014-1542-01	08	13	2		4014-2359-01	01	18	1											
4014-1543-01	08	11	2		4014-3028-01	04	09	1											
4014-1544-01	08	12	2		4014-3028-01	06	07	1											
4014-1546-01	05	16	1		4014-3029-01	06	20	1											
4014-1547-01	04	12	1		4014-3143-01	01	10	1											
4014-1550-01	06	14	1		4014-3145-01	03	03	1											
4014-1551-01	05	19	1		4014-3146-01	05	08	1											
4014-1552-01	05	05	1		4014-3147-01	07	09	4											
4014-1553-01	06	13	1		4014-3219-01	05	02	1											
4014-1554-01	06	09	1		4014-3221-01	06	22	1											
4014-1556-01	08	03	1		4014-4010-01	08	07	2											
4014-1558-01	07	05	2		4014-4019-01	05	03	2											
4014-1559-01	08	02	2		4014-4029-01	01	16	2											
4014-1560-01	09	04	1		4014-4076-01	03	02	3											
4014-1561-01	09	09	1		4024-1028-01	05	14	2											
4014-1562-01	09	08	1		4024-2011-01	01	02	1											
4014-1564-01	09	05	1		4024-2025-01	03	11	1											
4014-1565-01	02	15	1		4024-2099-01	05	17	2											
4014-1571-01	07	07	4		4024-2140-01	02	05	1											
4014-1572-01	06	05	2		4024-2142-01	02	12	1											
4014-1579-01	04	03	2		4024-2144-01	02	17	1											
4014-1582-01	05	12	1		4024-2145-01	02	18	1											
4014-1582-01	06	17	1		4024-2147-01	02	11	1											
4014-1583-01	06	12	1		4593-2001-01	01	06	1											
4014-1584-01	08	09	8		4593-2001-01	03	10	1											
4014-1585-01	08	08	8		4593-2002-01	01	04	1											
4014-1592-01	08	10	4		4593-2003-01	01	14	2											
4014-1593-01	08	06	4		4593-2004-01	01	13	2											
4014-1602-01	05	06	2		4593-2005-01	01	15	2											
4014-1607-01	05	07	1		4593-2006-01	01	11	2											
4014-1624-01	03	13	1		4593-2007-01	01	12	2											
4014-1625-01	07	02	2		4593-2008-01	04	18	1											
4014-1634-01	09	07	1		4593-2009-01	04	17	2											
4014-1638-01	01	17	1		4593-2010-01	04	15	1											
4014-1639-01	01	08	1		4593-2011-01	03	07	1											
4014-1644-01	07	10	1		4593-2012-01	03	04	1											
4014-1649-01	07	06	2		4593-2013-01	03	05	1											
4014-1651-01	07	08	1		4593-2014-01	04	16	2											
4014-1694-01	06	04	1		4593-2015-01	02	04	1											
4014-1729-01	04	02	2		4593-2016-01	02	19	1											
4014-1729-01	06	08	5		4593-2017-01	02	07	1											
4014-1735-01	06	19	2		4593-2018-01	02	09	1											
4014-1754-01	06	24	2		4593-2019-01	05	01	1											
4014-1769-01	04	08	1		4593-2020-01	02	14	1											



MINOLTA

Copyright  
2001 MINOLTA Co., Ltd.

**MINOLTA Co., Ltd.**

7665-4593-21 01111000